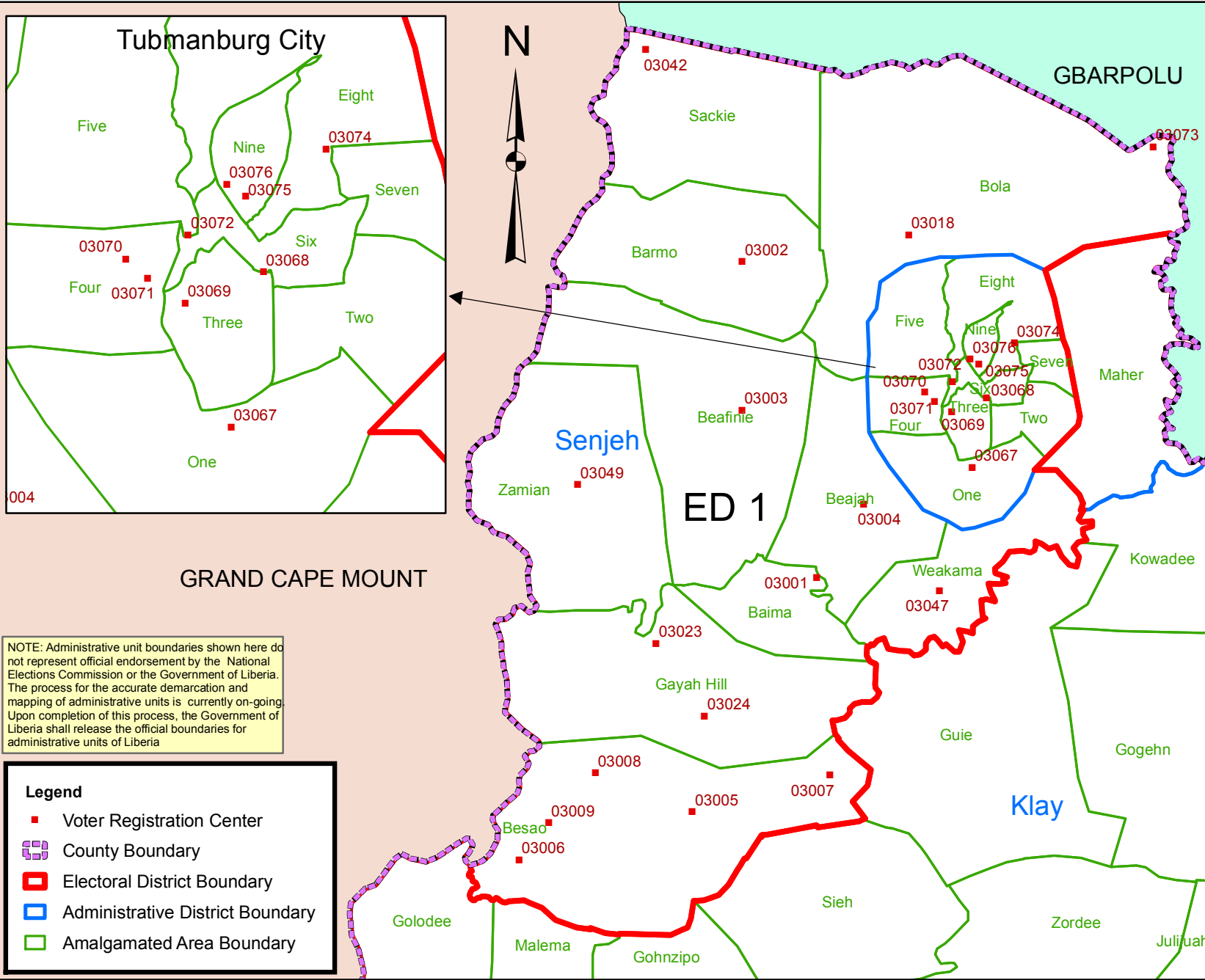


# Bomi County Electoral District No. 1 2011

Voter Registration Centers		
VRC Code	Center Name	Total
03001	Baima Palava Hut	174
03002	Barmo Palava Hut	385
03003	Beafinie Town Hall	488
03004	Beajah Public School	321
03005	Besao palava Hut	863
03006	Gba-Jakeh Gba Public School	1,590
03007	Govt. Farm Senjeh Town Hall	425
03008	Married Camp Town Hall	1,071
03009	Dependent Camp Town Hall	394
03018	Bola Town Palava Hut	359
03023	Boiling Camp Town Hall	292
03024	Gayah Hills Palava Hut	756
03042	Sackie Town Hall	419
03047	Red Hill Palava Hut	475
03049	Zamian Town Palava Hut	156
03067	Weakama Public School	647
03068	Jimina A. Wilson Public School	856
03069	Nyeila English & Arabic School	584
03070	Joseph Town Palava Hut	803
03071	C. H. Dewey High School	548
03072	Bomi Jr. High School	833
03073	Yomo Town Public School	192
03074	Administrative Building	302
03075	Court House/Moses Vincent Com.	1,419
03076	Vai Town Cinema	1,621
<b>Total Registrants (After Exhibition)</b>		<b>15,973</b>

Voter registration centers have been assigned to electoral districts. Therefore, a person is assigned to the same electoral district of the center where he or she registered.

The final roll of registrants (after the Exhibition Exercise) is displayed. The provisional roll was utilized during the delineation exercise.



NOTE: Administrative unit boundaries shown here do not represent official endorsement by the National Elections Commission or the Government of Liberia. The process for the accurate demarcation and mapping of administrative units is currently on-going. Upon completion of this process, the Government of Liberia shall release the official boundaries for administrative units of Liberia

**Legend**

- Voter Registration Center
- ▭ County Boundary
- ▭ Electoral District Boundary
- ▭ Administrative District Boundary
- ▭ Amalgamated Area Boundary

Data Sources:  
 2011 National Voter Registration Exercise- National Elections Commissions  
 2009-2010 Administrative Boundary & Locality Revalidation Project - Inter-Agency Taskforce on Delimitation (IATD: MIA, MLME, NEC, LISGIS)  
 2007 National Geographic Planning - Liberia Institute of Statistics & Geo-Information Services (LISGIS)  
 2006-2007 Boundary Harmonization Exercise - Special Joint Stakeholders Collaborative Committee (SJSCC)



Scale: 200,000  
 Map Projection: UTM Zone 29N  
 Datum: WGS 84  
 Unit: Meter



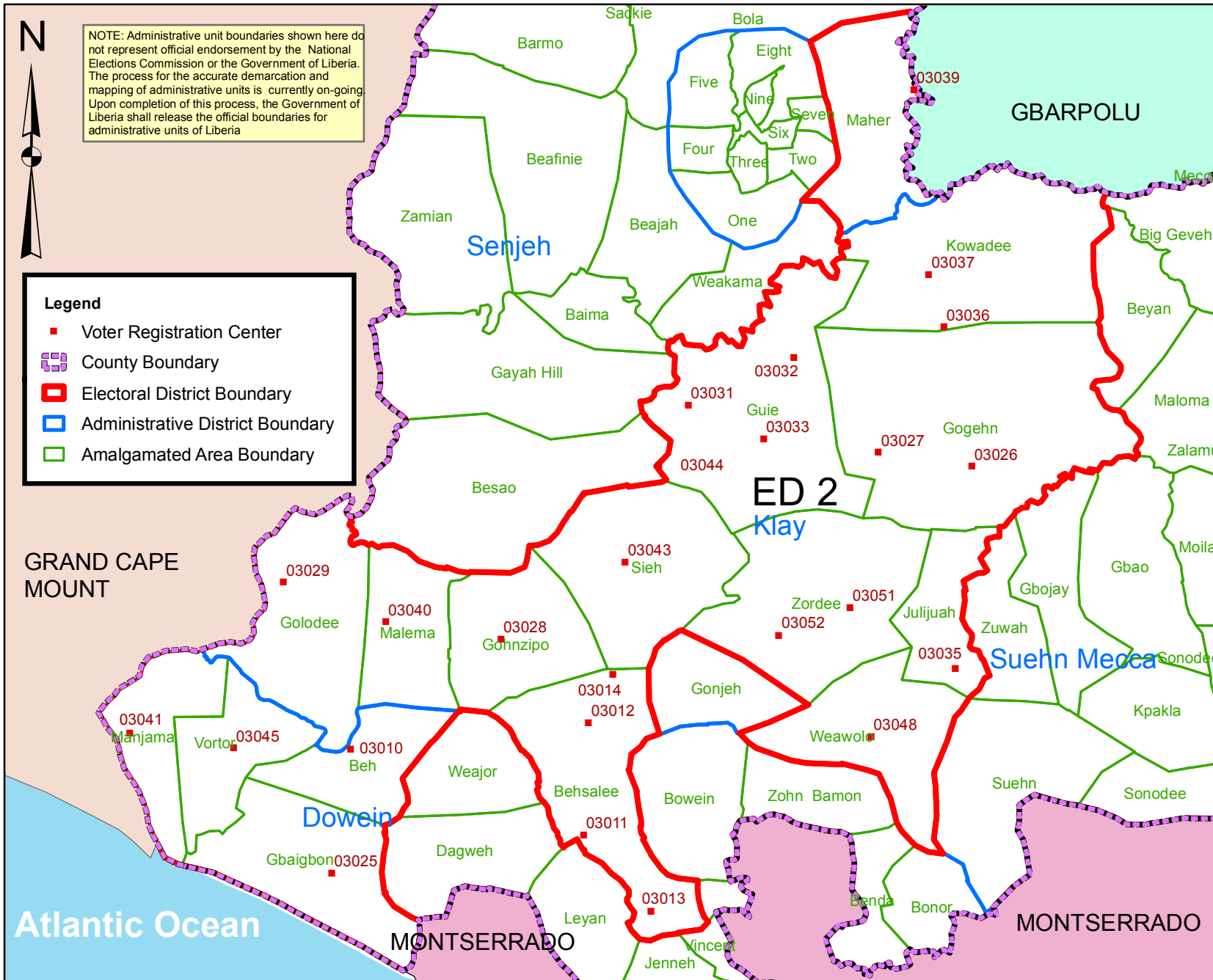
Prepared & Printed By:  
 National Elections Commission  
 Production Date: 29 July 2011



NOTE: Administrative unit boundaries shown here do not represent official endorsement by the National Elections Commission or the Government of Liberia. The process for the accurate demarcation and mapping of administrative units is currently on-going. Upon completion of this process, the Government of Liberia shall release the official boundaries for administrative units of Liberia.

**Legend**

- Voter Registration Center
- ▭ County Boundary
- ▭ Electoral District Boundary
- ▭ Administrative District Boundary
- ▭ Amalgamated Area Boundary



# Bomi County Electoral District No. 2 2011

**Voter Registration Centers**

VRC Code	Name	Total
03010	Beh Town Hall	849
03011	Sass Town Public School	1,381
03012	Barmon Palava Hut	636
03013	Golodee Gayla Town Hall	971
03014	Gbargbah Palava Hut	673
03025	Gbaigbon Town Hall	439
03026	Goghén Palava Hut	606
03027	Jawajeh Palava Hut	636
03028	Gohnzipo Town Hall	550
03029	Golodee Lassana Pub. Sch.	578
03031	Guie Town Hall	908
03032	Managbokai Palava Hut	395
03033	Domagbamatina palava Hut	297
03035	FefehTown Public School	550
03036	Geveh Fahnsee Palava Hut	230
03037	Kowadee Palava Hut	121
03039	Gbakendu Palava Hut	187
03040	Malema Town Hall	1,050
03041	Manjama Palava Hut	226
03043	Klay Town Hall	1,937
03044	Govt. Farm Klay Palava Hut	468
03045	Vortor Town Palava Hut	366
03048	Beajojo's Clinic	637
03051	Zordee Palava Hut	588
03052	Monnoh Town Hall	458
<b>Total Registrants (After Exhibition)</b>	<b>15,737</b>	

Voter registration centers have been assigned to electoral districts. Therefore, a person is assigned to the same electoral district of the center where he or she registered.

The final roll of registrants (after the Exhibition Exercise) is displayed. The provisional roll was utilized during the delineation exercise.

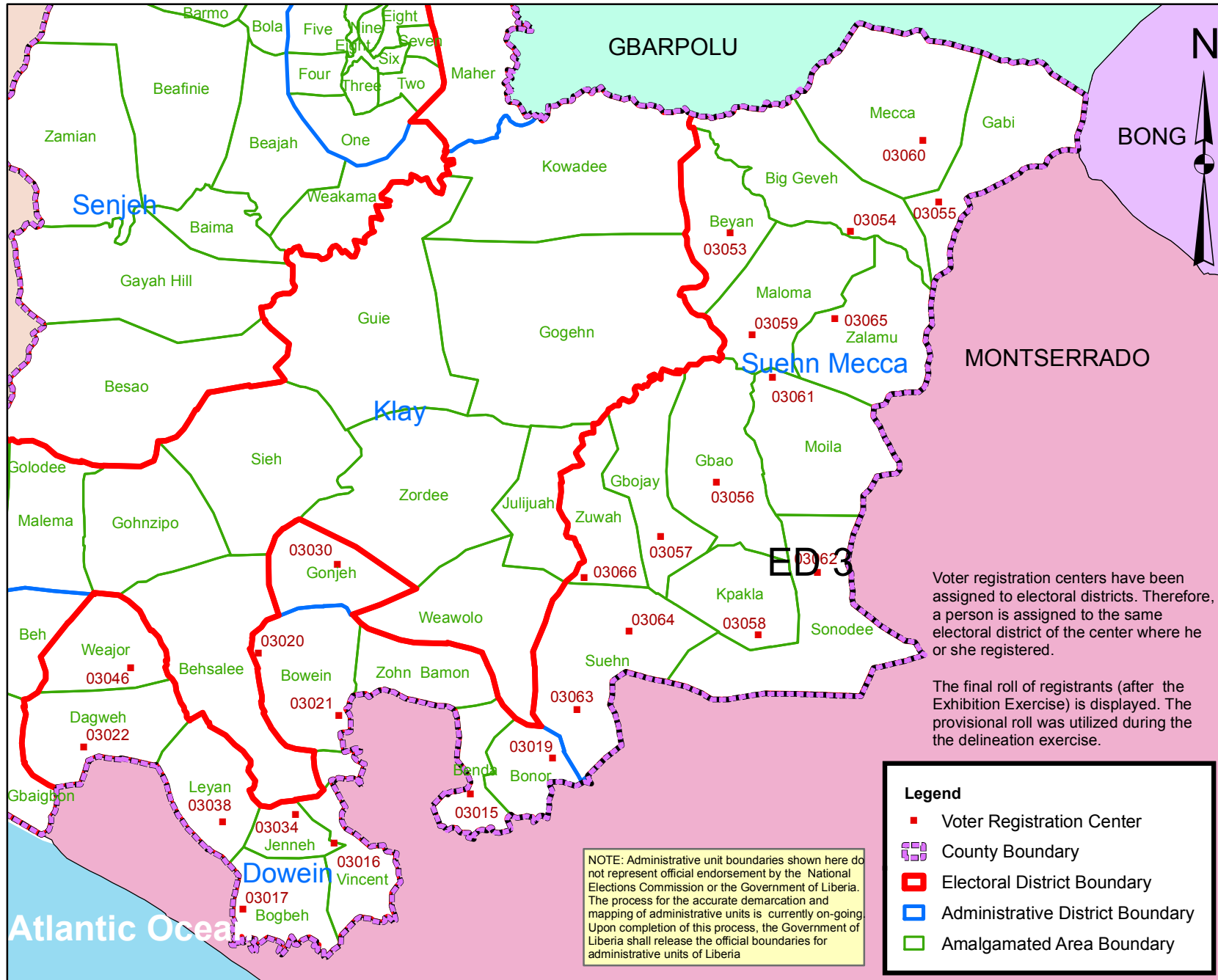
Data Sources:  
 2011 National Voter Registration Exercise- National Elections Commissions  
 2009-2010 Administrative Boundary & Locality Revalidation Project - Inter-Agency Taskforce on Delimitation (IATD: MIA, MLME, NEC, LISGIS)  
 2007 National Geographic Planning - Liberia Institute of Statistics & Geo-Information Services (LISGIS)  
 2006-2007 Boundary Harmonization Exercise - Special Joint Stakeholders Collaborative Committee (SJSKC)



Scale: 250,000  
 Map Projection: UTM Zone 29N  
 Datum: WGS 84  
 Unit: Meter



Prepared & Printed By:  
 National Elections Commission  
 Production Date: 29 July 2011



# Bomi County Electoral District No. 3 2011

Voter Registration Centers		
VRC Code	Name	Total
03015	Tulaymu Palava Hut	405
03016	Demeh Palava Hut	1,928
03017	Bogbeh Palava Hut	935
03019	Bonor Town Palava Hut	401
03020	Bowien Town Palava Hut	424
03021	Jeon School	201
03022	Dagbweh Town Hall	1,182
03030	Gonjeh Palava Hut	407
03034	Jenneh #3 Palava Hut	1,626
03038	Gowein Palava Hut	361
03046	Weajor Town Hall	931
03050	Zohnbaimon Palava Hut	218
03053	Quassia Town Palava Hut	151
03054	Big Geveh Palava Hut	322
03055	Gbai Palava Hut	231
03056	Gbao Palava Hut	568
03057	Gbojah Palava Hut	855
03058	Kpakla Palava Hut	476
03059	Maloma Palava Hut	240
03060	Mecca Palava Hut	570
03061	Moila Town Hall	432
03062	Sonodee Town Hall	378
03063	Alasala Palava Hut	904
03064	Suehn Town Hall	880
03065	Mulbah Town Hall	459
03066	Zuwah Town Palava Hut	391
<b>Total Registrants (After Exhibition)</b>		<b>15,876</b>

Voter registration centers have been assigned to electoral districts. Therefore, a person is assigned to the same electoral district of the center where he or she registered.

The final roll of registrants (after the Exhibition Exercise) is displayed. The provisional roll was utilized during the delineation exercise.

**Legend**

- Voter Registration Center
- ▭ County Boundary
- ▭ Electoral District Boundary
- ▭ Administrative District Boundary
- ▭ Amalgamated Area Boundary

NOTE: Administrative unit boundaries shown here do not represent official endorsement by the National Elections Commission or the Government of Liberia. The process for the accurate demarcation and mapping of administrative units is currently on-going. Upon completion of this process, the Government of Liberia shall release the official boundaries for administrative units of Liberia

Data Sources:  
 2011 National Voter Registration Exercise- National Elections Commissions  
 2009-2010 Administrative Boundary & Locality Revalidation Project - Inter-Agency Taskforce on Delimitation (IATD: MIA, MLME, NEC, LISGIS)  
 2007 National Geographic Planning - Liberia Institute of Statistics & Geo-Information Services (LISGIS)  
 2006-2007 Boundary Harmonization Exercise - Special Joint Stakeholders Collaborative Committee (SJSCC)



Scale: 270,000  
 Map Projection: UTM Zone 29N  
 Datum: WGS 84  
 Unit: Meter

