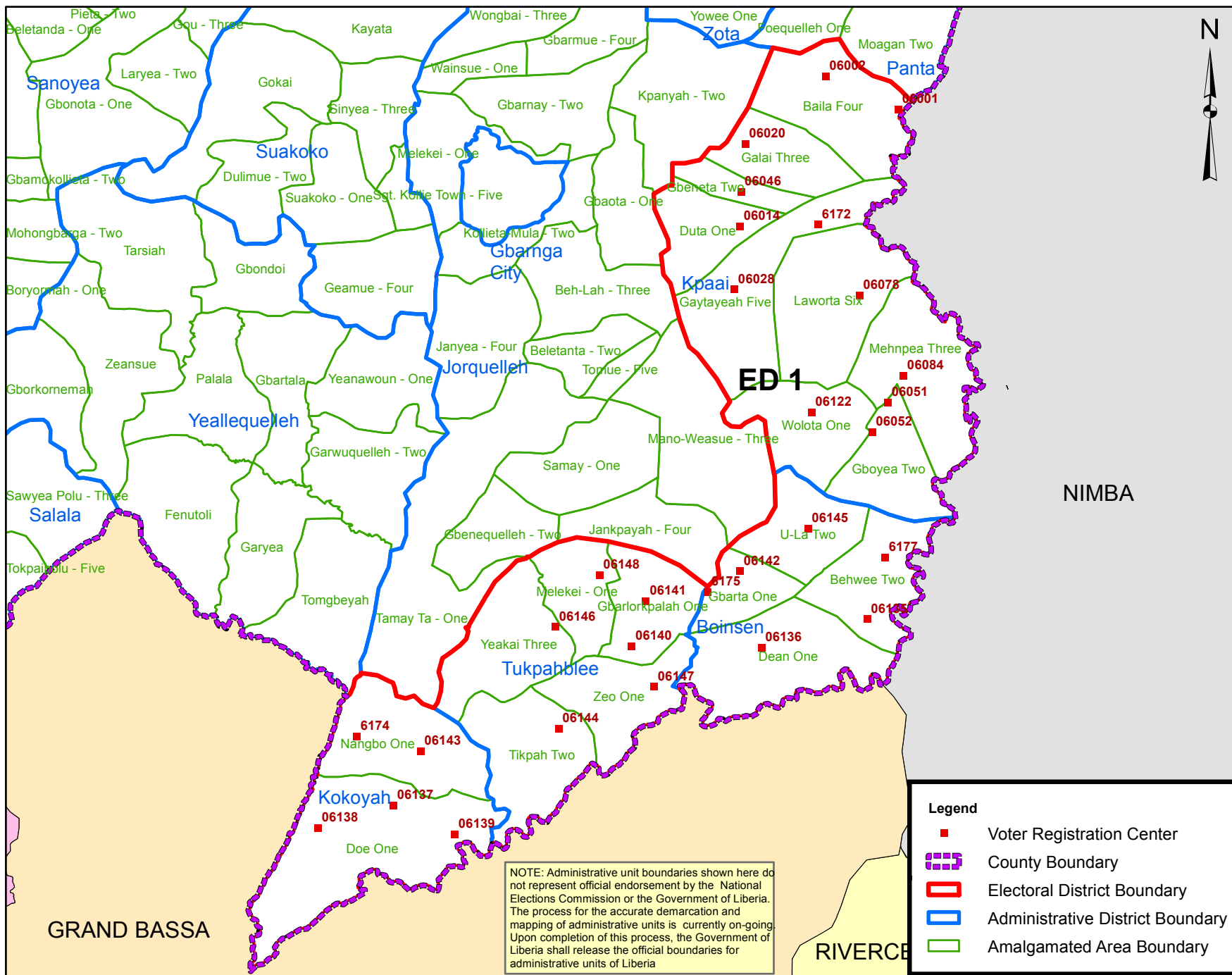


Bong County Electoral Districts No.1 2017



NIMBA

GRAND BASSA

RIVERCE

NOTE: Administrative unit boundaries shown here do not represent official endorsement by the National Elections Commission or the Government of Liberia. The process for the accurate demarcation and mapping of administrative units is currently on-going. Upon completion of this process, the Government of Liberia shall release the official boundaries for administrative units of Liberia

Legend

- Voter Registration Center
- County Boundary
- Electoral District Boundary
- Administrative District Boundary
- Amalgamated Area Boundary

| Voter Registration Centers | | |
|---------------------------------------------|---------------------------------|-------------------|
| VRC Code | Center Name | Total Registrants |
| 6001 | Baila Public School | 1,248 |
| 6002 | Sarworlor Public School | 802 |
| 6014 | Duta Town Hall | 1,347 |
| 6020 | Galai Public School | 1,149 |
| 6028 | Tarsai Palava Hut | 968 |
| 6046 | Palala Public School | 2,683 |
| 6051 | Green Hill Quarry Public School | 610 |
| 6052 | Zowienta Public School | 2,719 |
| 6078 | Zeby Public School | 1,593 |
| 6084 | Yoepa Palava Hut | 1,224 |
| 6122 | Dahn-Kan Palava Hut | 1,167 |
| 6135 | Yolota Palava Hut | 998 |
| 6136 | Gold Camp Palava Hut | 3,019 |
| 6137 | Doe Public School | 518 |
| 6138 | Gbelletay Palava Hut | 300 |
| 6139 | Rock Crusher Palava Hut | 965 |
| 6140 | Botota Public School | 1,083 |
| 6141 | Gbalorkpala Public School | 845 |
| 6142 | Old Gbarta Palava Hut | 961 |
| 6143 | Nangbo Palava Hut | 453 |
| 6144 | Tokpa-Ta Public School | 1,018 |
| 6145 | U-Lah Public School | 1,129 |
| 6146 | Gbecohn Public School | 1,754 |
| 6147 | Zeo Palava Hut | 339 |
| 6148 | Malonkai Palava Hut | 457 |
| 6172 | Kpaai Public School | 933 |
| 6174 | Fohr Palava Hut | 248 |
| 6175 | Christ Disciple Baptist Hall | 499 |
| 6177 | Behwee Public School | 613 |
| Total Registrants (After Exhibition) | | 31,642 |

Voter registration centers have been assigned to electoral districts. Therefore, a person is assigned to the same electoral district of the center where he or she registered.

The final roll of registrants (after the Exhibition Exercise) is displayed.

Data Sources:
 2017 National Voter Registration Exercise- National Elections Commissions
 2009-2010 Administrative Boundary & Locality Revalidation Project - Inter-Agency Taskforce on Delimitation (IATD: MIA, MLME, NEC, LISGIS)
 2007 National Geographic Planning - Liberia Institute of Statistics & Geo-Information Services (LISGIS)
 2006-2007 Boundary Harmonization Exercise - Special Joint Stakeholders Collaborative Committee (SJSCC)

Scale: 1:700,000
 Map Projection: UTM Zone 29N
 Datum: WGS 84
 Unit: Meter



Prepared & Printed By:
 National Elections Commission
 Production Date: 20 June 2017

