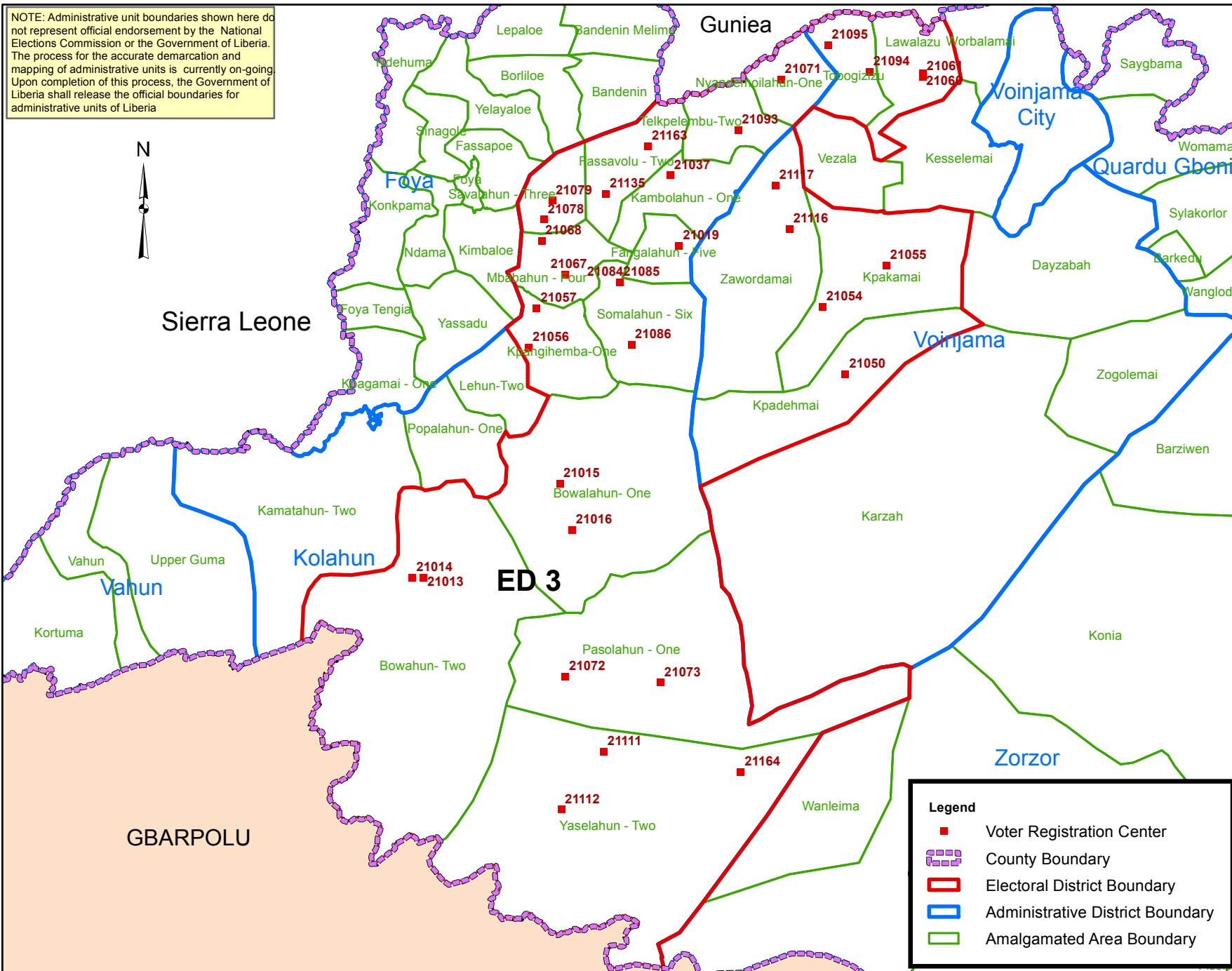


NOTE: Administrative unit boundaries shown here do not represent official endorsement by the National Elections Commission or the Government of Liberia. The process for the accurate demarcation and mapping of administrative units is currently on-going. Upon completion of this process, the Government of Liberia shall release the official boundaries for administrative units of Liberia



Sierra Leone

GBARPOLU



Lofa County Electoral District No. 3 2017

Voter Registration Centers		
VRC Code	Center Name	Total Registrants
21013	Lukasu Town Hall	1,627
21014	Bondowalahun Town Hall	608
21015	Bowalahun Town Hall	1,086
21016	Gilema Town Hall	445
21019	Balahun Public School	825
21037	Taininahun Public School	591
21050	Kpadehmai Town Hall	848
21054	Zeayorzu Public School	318
21055	Kpakamai Public School	370
21056	Bolahun Public School	1,568
21057	Sosomolahun Public School	392
21060	Lawalazu Town Hall	1,031
21061	Lawalazu Public School	1,059
21067	Mbahahun Public School	795
21068	Korworhun Public School	381
21071	Nyandemoilahun Public School	1,129
21072	Pasolahun Town Hall	388
21073	Gondorlahun Public School	786
21078	Savalahun Town Hall	651
21079	Kamatahum Public School	645
21084	Kolahun Public School	2,845
21085	Kolahun Town Hall	2,280
21086	Somalahun Town Hall	614
21093	Tawalahun Town Hall	777
21094	Sammie Public School	826
21095	Tobogizizu Public School	1,255
21111	Yaselahun Town Hall	349
21112	Gelema Town Hall	531
21116	Zawordamai Public School	672
21117	Johny's Town Public School	652
21135	Ngorkorhun Public School	801
21152	Kpangbalamai Town Hall	170
21163	Fassavolu Town Hall	816
21164	Jenneh Palava Hut	252
Total Registrants (After Exhibition)		28,383

Legend

- Voter Registration Center
- ▭ County Boundary
- ▭ Electoral District Boundary
- ▭ Administrative District Boundary
- ▭ Amalgamated Area Boundary

Voter registration centers have been assigned to electoral districts. Therefore, a person is assigned to the same electoral district of the center where he or she registered.

The final roll of registrants (after the Exhibition Exercise) is displayed.

Data Sources:
 2017 National Voter Registration Exercise- National Elections Commission
 2009-2010 Administrative Boundary & Locality Revalidation Project - Inter-Agency Taskforce on Delimitation (IATD: MIA, MLME, NEC, LISGIS)
 2007 National Geographic Planning - Liberia Institute of Statistics & Geo-Information Services (LISGIS)
 2006-2007 Boundary Harmonization Exercise - Special Joint Stakeholders Collaborative Committee (SJSSC)



Scale: 1:900,000
 Map Projection: UTM Zone 29N
 Datum: WGS 84
 Unit: Meter



Prepared & Printed By:
 National Elections Commission
 Production Date: 20 June 2017