

Legend

- Voter Registration Center
- ▭ County Boundary
- ▭ Electoral District Boundary
- ▭ Administrative District Boundaries
- ▭ Amalgamated Area Boundary

Atlantic Ocean

NOTE: Administrative unit boundaries shown here do not represent official endorsement by the National Elections Commission or the Government of Liberia. The process for the accurate demarcation and mapping of administrative units is currently on-going. Upon completion of this process, the Government of Liberia shall release the official boundaries for administrative units of Liberia

Margibi County Electoral District No. 1 2011

Voter Registration Centers		
VRC Code	Name	Total
24018	Prince Wallace Estate Hall	690
24019	Division 16 long Camp Office	2,235
24020	Division 6 Front Office	871
24021	Monclay Palava Hut	931
24026	Duside Village Office	1,984
24030	Division 9 Old Camp School	1,204
24031	Brow ne Tow n Palava Hut	739
24033	Division 11 Office	960
24034	Garmaymu Tow n Palava Hut	624
24036	Mambah Civil Comp. Palava Hut	1,110
24050	Zeor Palava Hut	848
24059	Joezohn Palava Hut	525
24070	Foe-day Tow n School	989
24102	Lloydsville Public School	150
24103	Scheiffelin Commissioner's Office	1,113
24104	J.P. Mitchell School	1,454
24105	Dw azon Public School	2,946
24106	Rock Institute School	2,499
24107	Kpakpacon Palava Hut	359
24108	Marshall City Hall	667
24109	Henry Tow n Palava Hut	489
24132	Zeew orh Palava Hut	1,031
Total Registrants (After Exhibition):		24,418

Voter registration centers have been assigned to electoral districts. Therefore, a person is assigned to the same electoral district of the center where he or she registered.

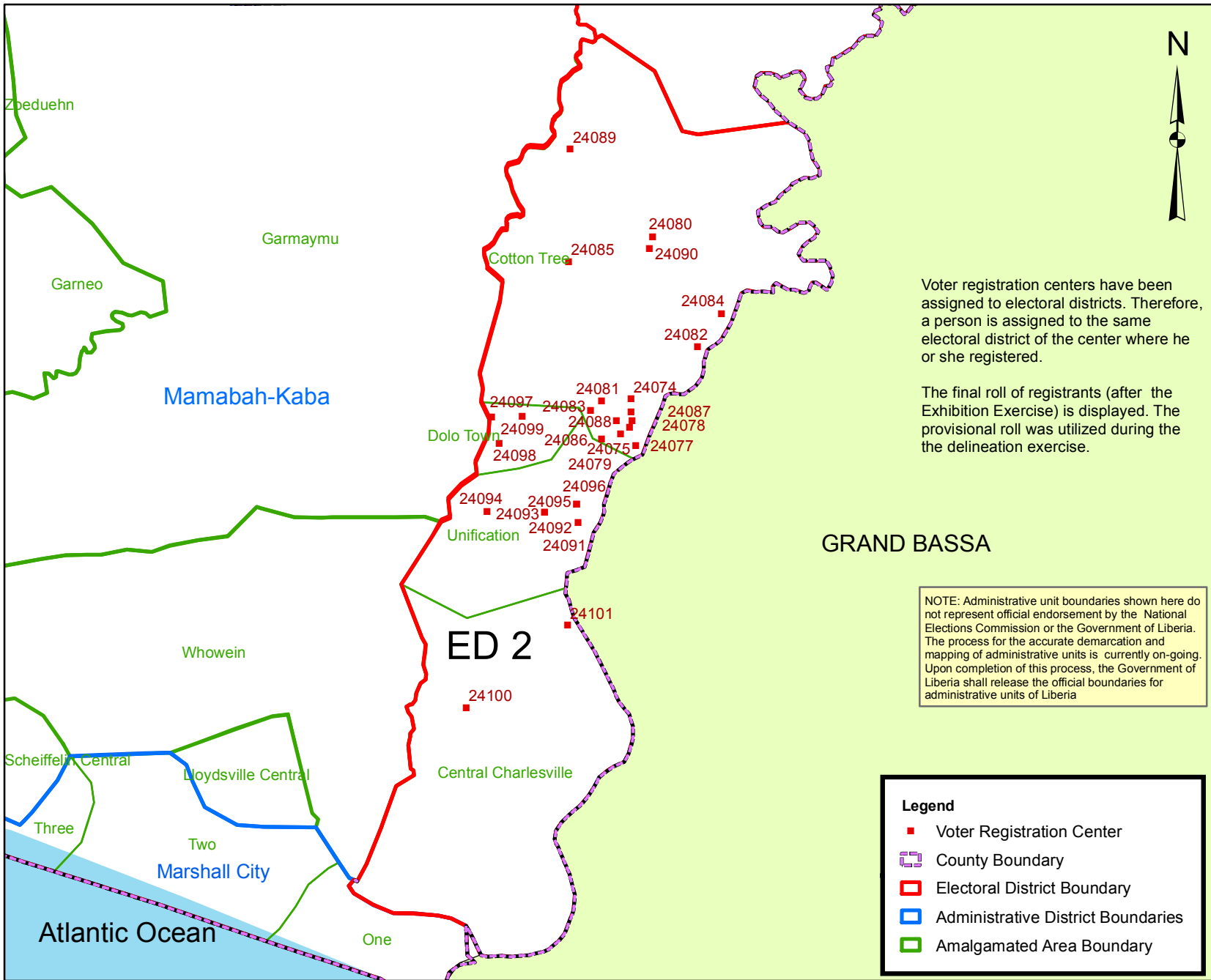
The final roll of registrants (after the Exhibition Exercise) is displayed. The provisional roll was utilized during the delineation exercise.

Data Sources:
 2011 National Voter Registration Exercise- National Elections Commissions
 2009-2010 Administrative Boundary & Locality Revalidation Project - Inter-Agency Taskforce on Delimitation (IATD: MIA, MLME, NEC, LISGIS)
 2007 National Geographic Planning - Liberia Institute of Statistics & Geo-Information Services (LISGIS)
 2006-2007 Boundary Harmonization Exercise - Special Joint Stakeholders Collaborative Committee (SJSKC)



Scale: 200,000
 Map Projection: UTM Zone 29N
 Datum: WGS 84
 Unit: Meter





Voter registration centers have been assigned to electoral districts. Therefore, a person is assigned to the same electoral district of the center where he or she registered.

The final roll of registrants (after the Exhibition Exercise) is displayed. The provisional roll was utilized during the delineation exercise.

NOTE: Administrative unit boundaries shown here do not represent official endorsement by the National Elections Commission or the Government of Liberia. The process for the accurate demarcation and mapping of administrative units is currently on-going. Upon completion of this process, the Government of Liberia shall release the official boundaries for administrative units of Liberia

Legend

- Voter Registration Center
- ▭ County Boundary
- ▭ Electoral District Boundary
- ▭ Administrative District Boundaries
- ▭ Amalgamated Area Boundary

Margibi County Electoral District No. 2 2011

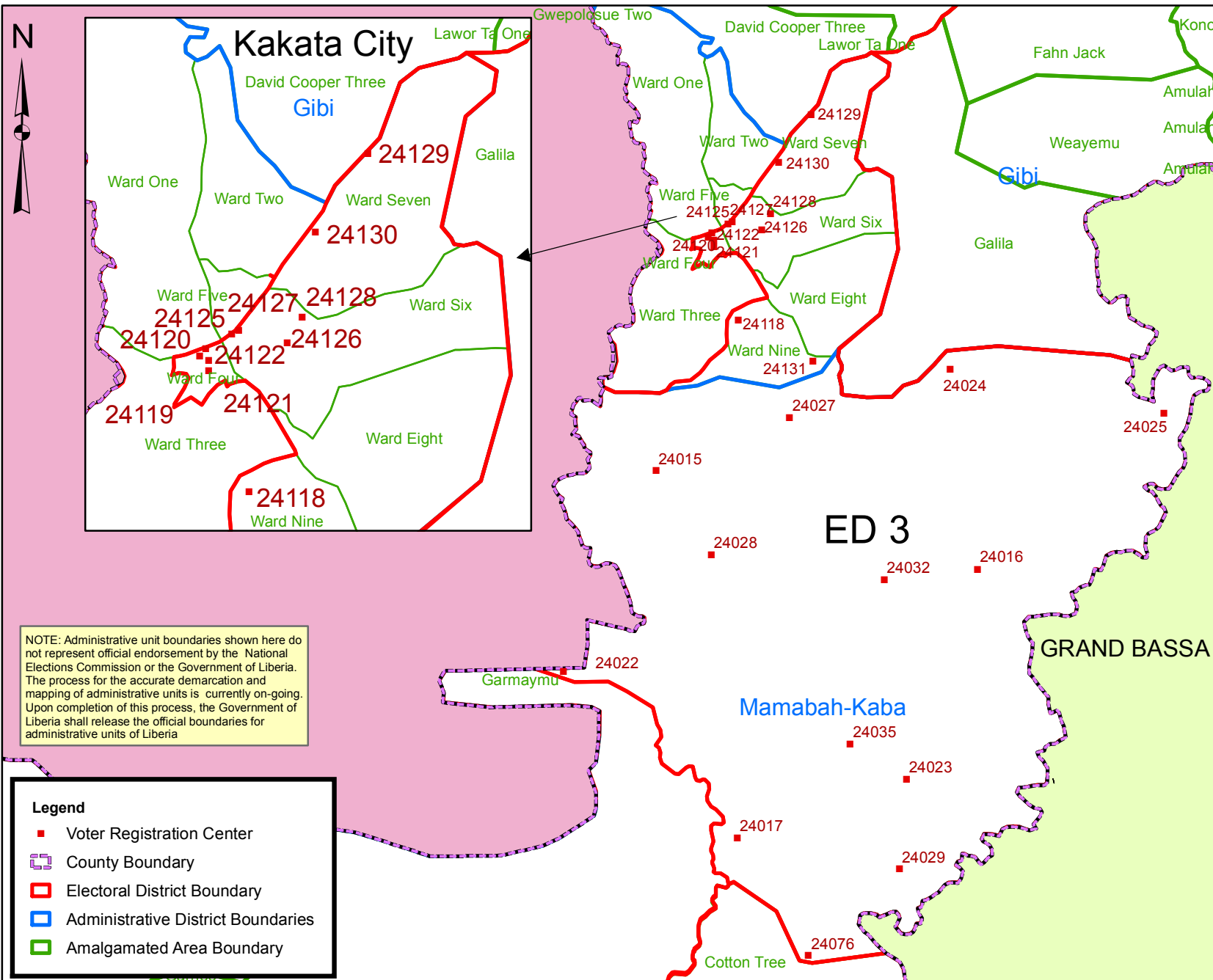
Voter Registration Centers		
VRC Code	Name	Total
24074	Cotton Tree Community School	1,774
24075	Hydro Community School	275
24077	Bethel World Outreach Church	553
24078	Divison 45 Offshore	1,650
24079	Divison 45 Dennisville Pal. Hut	1,012
24080	Divison 44 Walker School	1,378
24081	Central Cotton Tree Gas Station	1,131
24082	Barclay's Farm School	986
24083	Harbel Multilateral Comm. Sch.	1,137
24084	Poinea Palava Hut	114
24085	Divison 44 Pinco Camp Pal. Hut	357
24086	Harbel Garden School	1,373
24087	Harbel Grove Palava hut	1,145
24088	Harbel Field House	815
24089	Division 42 Suger Hill office	435
24090	Cotton Tree Palava Hut	1,203
24091	R I A Terminal	601
24092	R.S. Caulfield School	980
24093	Children Hope Community Sch.	1,635
24094	Joe Blow Town Palava Hut	648
24095	Clipper Camp 1	627
24096	Clipper Camp 2	1,178
24097	Dolo Town Community School	1,612
24098	Moth. of Jesus Christ Cath. Sch.	2,174
24099	Peter Town Jr. High School	733
24100	Charlesville Public School	716
24101	Exchem Compound	333
Total Registrants (After Exhibition):		26,575

Data Sources:
 2011 National Voter Registration Exercise- National Elections Commissions
 2009-2010 Administrative Boundary & Locality Revalidation Project - Inter-Agency Taskforce on Delimitation (IATD: MIA, MLME, NEC, LISGIS)
 2007 National Geographic Planning - Liberia Institute of Statistics & Geo-Information Services (LISGIS)
 2006-2007 Boundary Harmonization Exercise - Special Joint Stakeholders Collaborative Committee (SJSCC)



Scale: 135,000
 Map Projection: UTM Zone 29N
 Datum: WGS 84
 Unit: Meter





NOTE: Administrative unit boundaries shown here do not represent official endorsement by the National Elections Commission or the Government of Liberia. The process for the accurate demarcation and mapping of administrative units is currently on-going. Upon completion of this process, the Government of Liberia shall release the official boundaries for administrative units of Liberia

Legend

- Voter Registration Center
- ▭ County Boundary
- ▭ Electoral District Boundary
- ▭ Administrative District Boundaries
- ▭ Amalgamated Area Boundary

Margibi County Electoral District No. 3 2011

Voter Registration Centers		
VRC Code	Name	Total
24015	Division 25 Office	193
24016	Divison 29 Camp 2 Office	801
24017	Division 36 Office	551
24022	Division 14 Camp 3 Office	790
24023	Division 38 Old Camp office	1,293
24024	Division 31 Camp 3 Office	1,184
24025	Division 33 Office	357
24027	Division 26 Office	812
24028	Division 24 Camp 2 School	459
24029	Division 40 Camp 1 Office	1,552
24032	Divison 28 office	1,122
24035	Division 37 Office	737
24076	Divison 43 School	1,174
24118	Bright Farm School	309
24119	Evening Star Baptist Church	1,622
24120	Federation of Transport Union	1,024
24121	Brich-McNutt school	864
24122	E.J. Yancy School	1,310
24125	St. Augustine School	2,646
24126	Dominique Hena School	1,451
24127	Asaru Isamic School	1,231
24128	Mission for Today School	1,023
24129	Gborfela Public School	286
24130	Madina Community School	449
24131	26 Gate Community School	536
Total Registrants (After Exhibition):		23,776

Voter registration centers have been assigned to electoral districts. Therefore, a person is assigned to the same electoral district of the center where he or she registered.

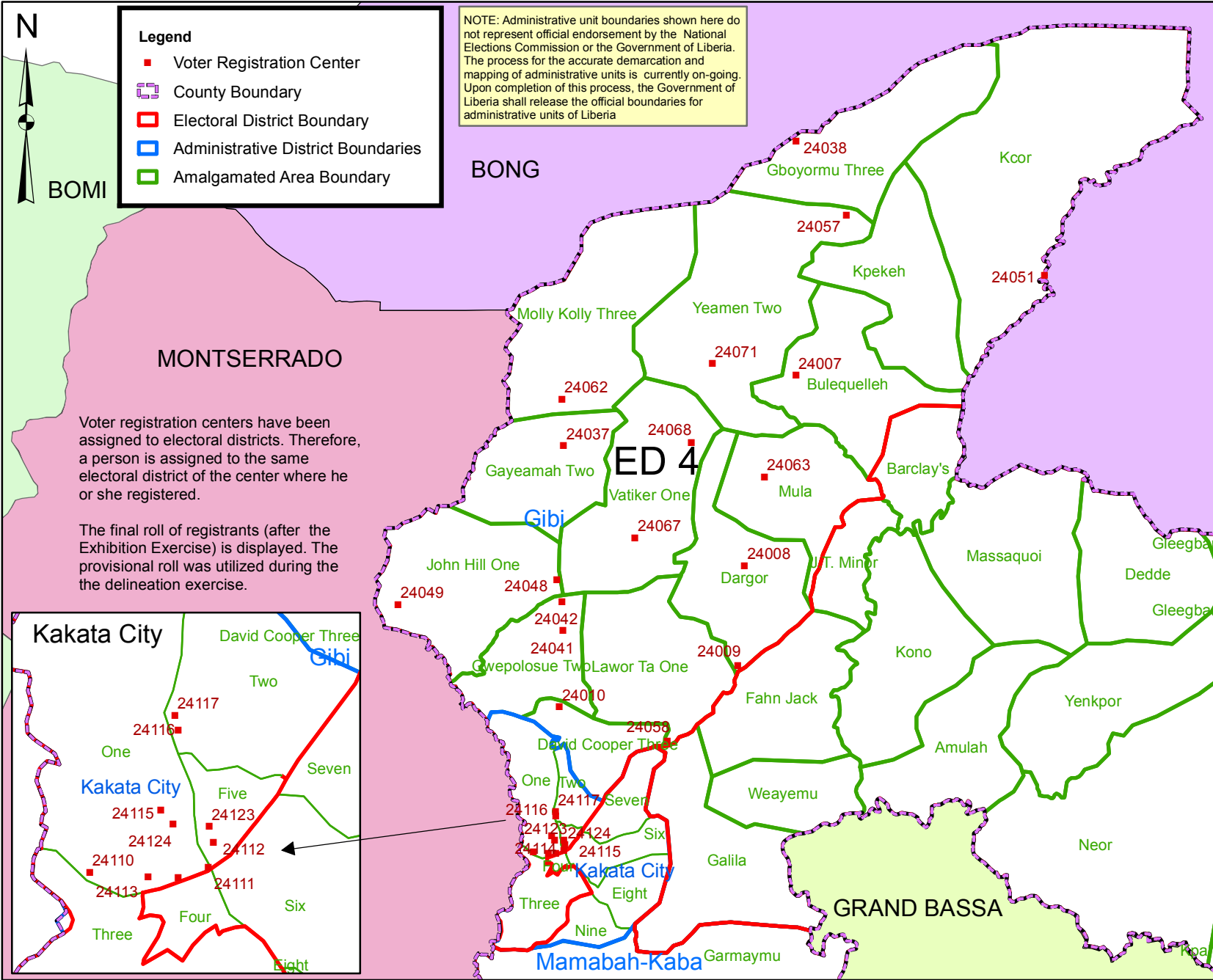
The final roll of registrants (after the Exhibition Exercise) is displayed. The provisional roll was utilized during the delineation exercise.

Data Sources:
 2011 National Voter Registration Exercise- National Elections Commissions
 2009-2010 Administrative Boundary & Locality Revalidation Project - Inter-Agency Taskforce on Delimitation (IATD: MIA, MLME, NEC, LISGIS)
 2007 National Geographic Planning - Liberia Institute of Statistics & Geo-Information Services (LISGIS)
 2006-2007 Boundary Harmonization Exercise - Special Joint Stakeholders Collaborative Committee (SJSCC)



Scale: 165,000
 Map Projection: UTM Zone 29N
 Datum: WGS 84
 Unit: Meter





Legend

- Voter Registration Center
- ▭ County Boundary
- ▭ Electoral District Boundary
- ▭ Administrative District Boundaries
- ▭ Amalgamated Area Boundary

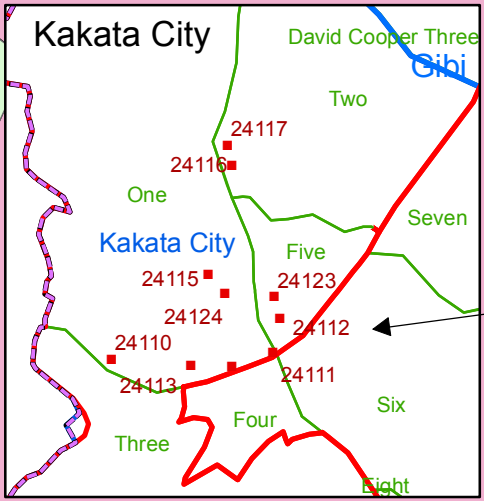
NOTE: Administrative unit boundaries shown here do not represent official endorsement by the National Elections Commission or the Government of Liberia. The process for the accurate demarcation and mapping of administrative units is currently on-going. Upon completion of this process, the Government of Liberia shall release the official boundaries for administrative units of Liberia

Margibi County Electoral District No. 4 2011

Voter Registration Centers		
VRC Code	Name	Total
24007	Richard Town Palava Hut	540
24008	Konoquelleh Town Palava Hut	421
24009	Brown Farm Palava Hut	1,023
24010	David Cooper Farm Palava Hut	846
24037	J.D. Lassana Farm Palava Hut	422
24038	Gboyarmu Palava Hut	351
24041	Gwepolosue Palava Hut	866
24042	Laketa Palava Hut	1,514
24048	Vanyema Palava Hut	377
24049	David T. Cooper Palava Hut	514
24051	Kpekeh Palava Hut	593
24057	Sakey Town Palava Hut	489
24058	Mary Page Farm Palava Hut	381
24062	Arthur Sherman Farm Pal. Hut	774
24063	Slocum Mission School	583
24067	Vartiker Town Palava Hut	363
24068	Gweh Paye Palava Hut	182
24071	Yeamen Public School	369
24110	BWI Campus	2,152
24111	Philadelphia Church	1,636
24112	Aminata Gas Station	2,418
24113	St. Paul Lutheran School	1,934
24114	Lango Lippaye	1,399
24115	Calvary Baptist School	834
24116	Conquerors Pentecostal Sch.	939
24117	Benla Community School	489
24123	Free Pentecostal School	962
24124	John Joseph School	955
Total Registrants (After Exhibition):		24,326

Voter registration centers have been assigned to electoral districts. Therefore, a person is assigned to the same electoral district of the center where he or she registered.

The final roll of registrants (after the Exhibition Exercise) is displayed. The provisional roll was utilized during the delineation exercise.



Data Sources:
 2011 National Voter Registration Exercise- National Elections Commissions
 2009-2010 Administrative Boundary & Locality Revalidation Project - Inter-Agency Taskforce on Delimitation (IATD: MIA, MLME, NEC, LISGIS)
 2007 National Geographic Planning - Liberia Institute of Statistics & Geo-Information Services (LISGIS)
 2006-2007 Boundary Harmonization Exercise - Special Joint Stakeholders Collaborative Committee (SJSCC)

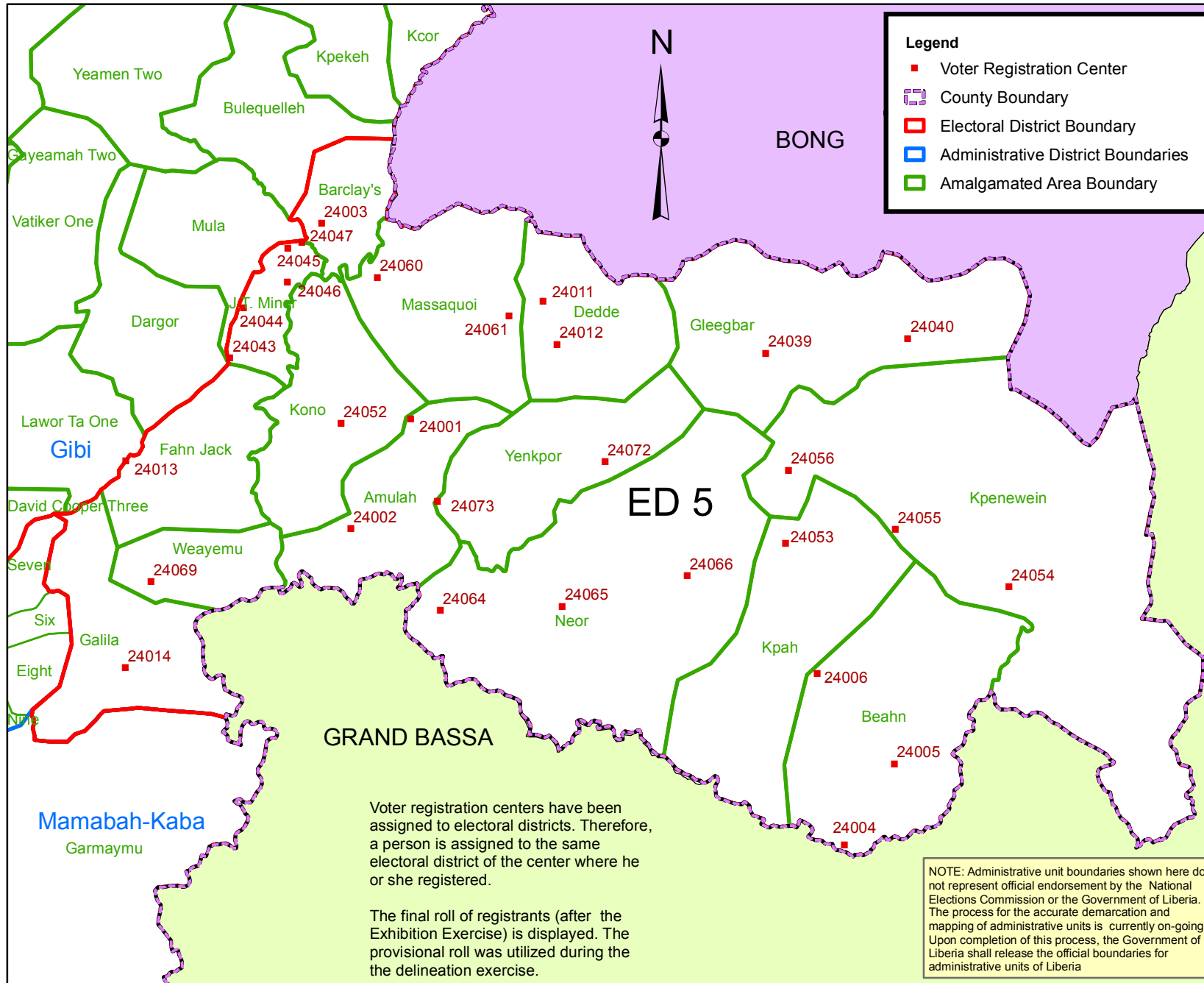


Scale: 275,000
 Map Projection: UTM Zone 29N
 Datum: WGS 84
 Unit: Meter



Prepared & Printed By:
 National Elections Commission
 Production Date: 29 July 2011

Margibi County Electoral District No. 5 2011



Voter Registration Centers		
VRC Code	Name	Total
24001	Bondo Barwo School	630
24002	Yarnwullie Public School	1,179
24003	Barclay's Farm Sch. of Christ	2,630
24004	Nuah Town Palava Hut	263
24005	Behn Gbowron Town Pal. Hut	484
24006	Lakar Town Palava Hut	215
24011	Baypolu Public School	1,463
24012	S. R. C. Camp III Public School	536
24013	Cinta Public School	896
24014	Vayema Palava Hut	344
24039	Gleegbar Town Public School	600
24040	Gao Town Public School	418
24043	Konola Mission School	716
24044	Jennita Palava Hut	943
24045	Laynala Palava Hut	781
24046	Bolorla Palava Hut	518
24047	Weala Palava Hut	1,933
24052	Kono Town Palava Hut	445
24053	Gbarjor Kor Palava Hut	448
24054	Gbolin Boe-Dian Public School	311
24055	Poye's Town Palava Hut	402
24056	Worhn Public School	1,330
24060	Massaquoi Public school	1,212
24061	S.R.C. Camp I Palava Hut	1,073
24064	Fahn Tika Palava Hut	347
24065	Gbudu Town Palava Hut	472
24066	Zeo Town Palava Hut	380
24069	Wolaila Public School	463
24072	Peter Town School	942
24073	Lonfay Palava Hut	435
Total Registrants (After Exhibition):		22,809

Voter registration centers have been assigned to electoral districts. Therefore, a person is assigned to the same electoral district of the center where he or she registered.

The final roll of registrants (after the Exhibition Exercise) is displayed. The provisional roll was utilized during the delineation exercise.

NOTE: Administrative unit boundaries shown here do not represent official endorsement by the National Elections Commission or the Government of Liberia. The process for the accurate demarcation and mapping of administrative units is currently on-going. Upon completion of this process, the Government of Liberia shall release the official boundaries for administrative units of Liberia

Data Sources:
 2011 National Voter Registration Exercise- National Elections Commissions
 2009-2010 Administrative Boundary & Locality Revalidation Project - Inter-Agency Taskforce on Delimitation (IATD: MIA, MLME, NEC, LISGIS)
 2007 National Geographic Planning - Liberia Institute of Statistics & Geo-Information Services (LISGIS)
 2006-2007 Boundary Harmonization Exercise - Special Joint Stakeholders Collaborative Committee (SJSKC)



Scale: 250,000
 Map Projection: UTM Zone 29N
 Datum: WGS 84
 Unit: Meter

