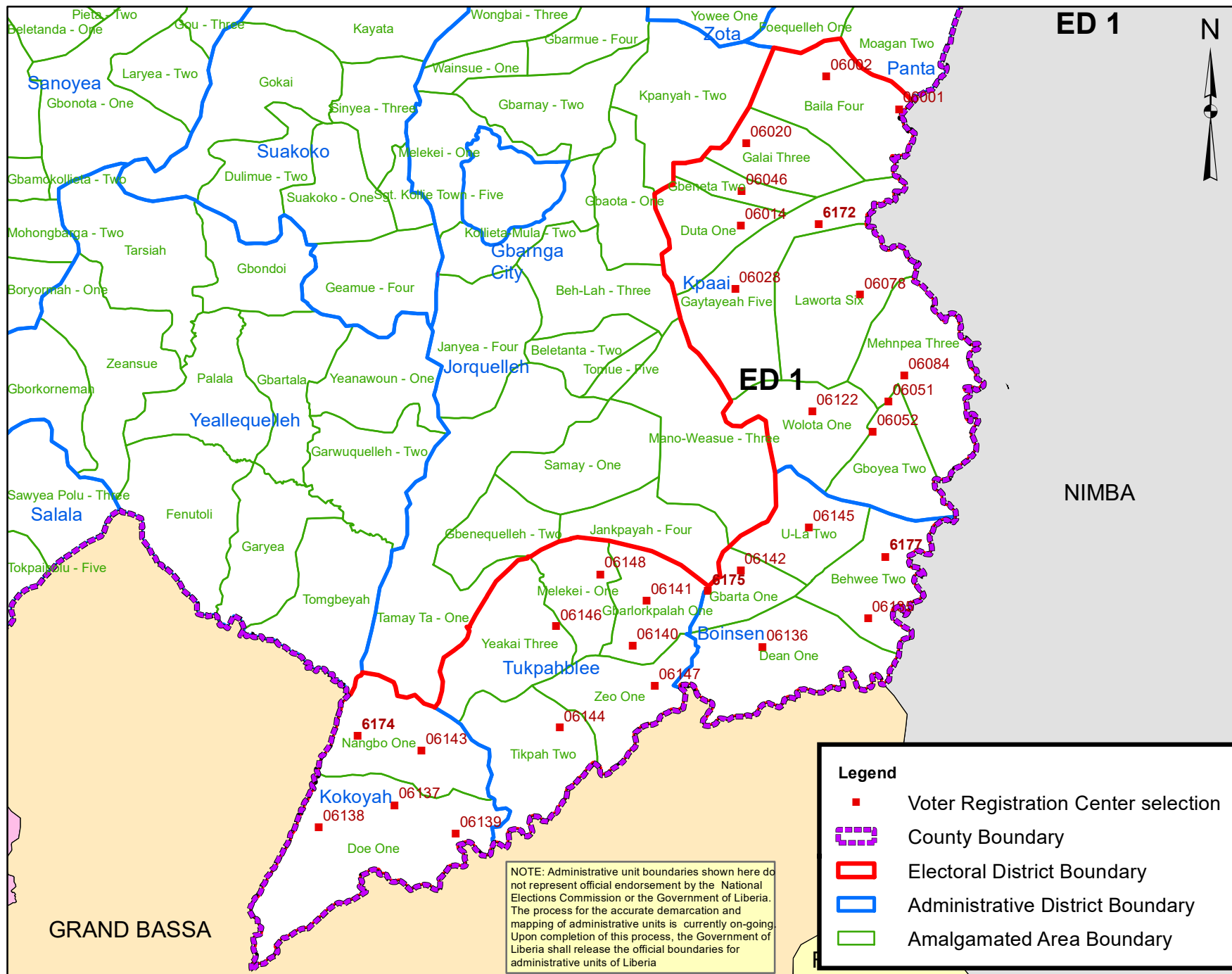


Bong County Electoral Districts No.1 2020



NOTE: Administrative unit boundaries shown here do not represent official endorsement by the National Elections Commission or the Government of Liberia. The process for the accurate demarcation and mapping of administrative units is currently on-going. Upon completion of this process, the Government of Liberia shall release the official boundaries for administrative units of Liberia

Legend

- Voter Registration Center selection
- County Boundary
- Electoral District Boundary
- Administrative District Boundary
- Amalgamated Area Boundary

Voter Registration Centers Electoral District #1		
VRC Code	Center Name	Total Registrants
6001	Baila Public School	1340
6002	Sarworlor Public School	873
6014	Duta Town Hall	1415
6020	Galai Public School	1204
6028	Tarsai Palava Hut	987
6046	Palala Public School	2900
6051	Green Hill Quarry Public School	629
6052	Zowienta Public School	2774
6078	Zeby Public School	1677
6084	Yopea Palava Hut	1271
6122	Dahn-Kan Palava Hut	1207
6135	Yolota Palava Hut	1024
6136	Gold Camp Palava Hut	3182
6137	Doe Public School	541
6138	Gbelletay Palava Hut	324
6139	Rock Crusher Palava Hut	974
6140	Botota Public School	1143
6141	Gbalorkpala Public School	888
6142	Old Gbartala Palava Hut	1030
6143	Nangbo Palava Hut	474
6144	Tokpa-Ta Public School	1063
6145	U-Lah Public School	1160
6146	Gbechoh Public School	1856
6147	Zeo Palava Hut	375
6148	Malonkai Palava Hut	484
6172	Kpaai Public School	982
6174	Fohr Palava Hut	261
6175	Christ Disciple Baptist Hall	529
6177	Behwee Public School	664
Total Registrants (After Exhibition)		33,231

Voter registration centers have been assigned to electoral districts. Therefore, a person is assigned to the same electoral district of the center where he or she registered.

The final roll of registrants (after the Exhibition Exercise) is displayed.

Data Sources:
 2017 National Voter Registration Exercise- National Elections Commissions
 2009-2010 Administrative Boundary & Locality Revalidation Project - Inter-Agency Taskforce on Delimitation (IATD: MIA, MLME, NEC, LISGIS)
 2007 National Geographic Planning - Liberia Institute of Statistics & Geo-Information Services (LISGIS)
 2006-2007 Boundary Harmonization Exercise - Special Joint Stakeholders Collaborative Committee (SJSCC)



Scale: 1:700,000
 Map Projection: UTM Zone 29N
 Datum: WGS 84
 Unit: Meter



Prepared & Printed By:
 National Elections Commission
 Production 29 November 2020