

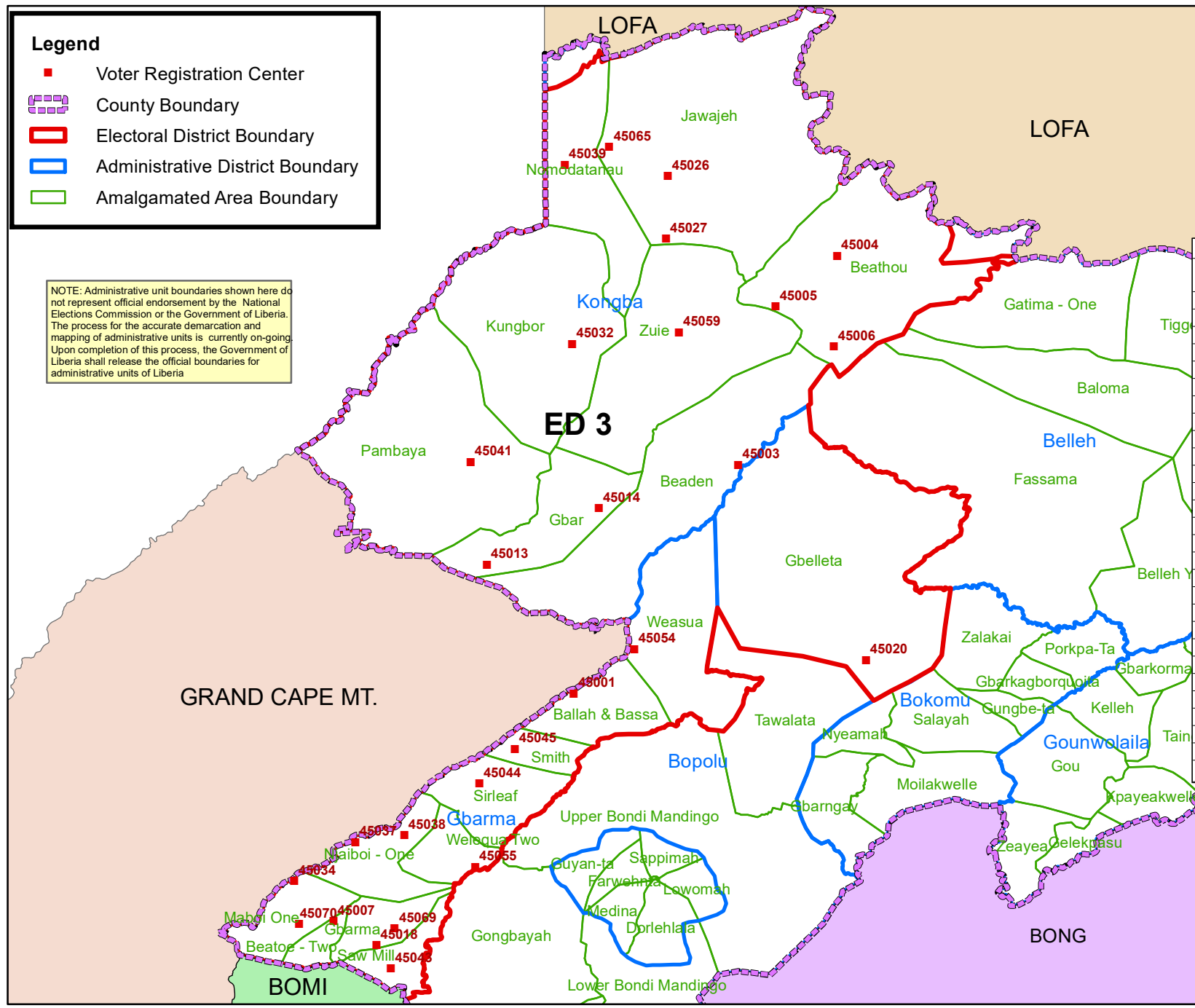
Gbarpolu County Electoral District No.3 2020



Legend

- Voter Registration Center
- County Boundary
- Electoral District Boundary
- Administrative District Boundary
- Amalgamated Area Boundary

NOTE: Administrative unit boundaries shown here do not represent official endorsement by the National Elections Commission or the Government of Liberia. The process for the accurate demarcation and mapping of administrative units is currently on-going. Upon completion of this process, the Government of Liberia shall release the official boundaries for administrative units of Liberia



Voter Registration Centers		
VRC Code	Center Name	Total Registrants
45001	Ballah Town Public School	340
45003	Beaden Town Hall	269
45004	Beathou Town Hall	162
45005	Domanmana Town Hall	172
45006	Marma Town Hall	325
45007	Beatoe Town	997
45013	Timba Town Palava Hut	377
45014	Amtel Camp Palava Hut	155
45018	Gbarma Centra High School	2353
45020	Gbelleta Public School	724
45026	Galahun Town Hall	78
45027	Bombohun Town Hall	62
45032	Kungbor Town Hall	845
45034	Vaye Town (Weamawou) Public School	1107
45037	Njaiboi Town Hall	348
45038	Yangaya Town Hall	963
45039	Nomodatanau Town Hall	2021
45041	Camp Alpha Town Palava Hut	909
45043	Karnley Town Palava Hut	1104
45044	Tarkpoimah Town Hall	559
45045	Smith Public School	511
45054	Weasua Town Hall	1469
45055	Welequa Town Hall	407
45059	Zuie School	659
45065	Jawajeh Town Hall	574
45069	Zuo Palava hut	1093
45070	Moboi Public School	456
Total Registrants (After Exhibition)		19,039

Voter registration centers have been assigned to electoral districts. Therefore a person is assigned to the same electoral district of the center where he or she registered.

The final roll of registrants (after the Exhibition Exercise) is displayed.

Data Sources:
 2017 National Voter Registration Exercise- National Elections Commission
 2009-2010 Administrative Boundary & Locality Revalidation Project - Inter-Agency Taskforce on Delimitation (IATD: MIA, MLME, NEC, LISGIS)
 2007 National Geographic Planning - Liberia Institute of Statistics & Geo-Information Services (LISGIS)
 2006-2007 Boundary Harmonization Exercise - Special Joint Stakeholders Collaborative Committee (SJSCC)



Scale: 1:663,000
 Map Projection: UTM Zone 29N
 Datum: WGS 84
 Unit: Meter



Prepared & Printed By:
 National Elections Commission GIS Section
 Production 29 November 2020