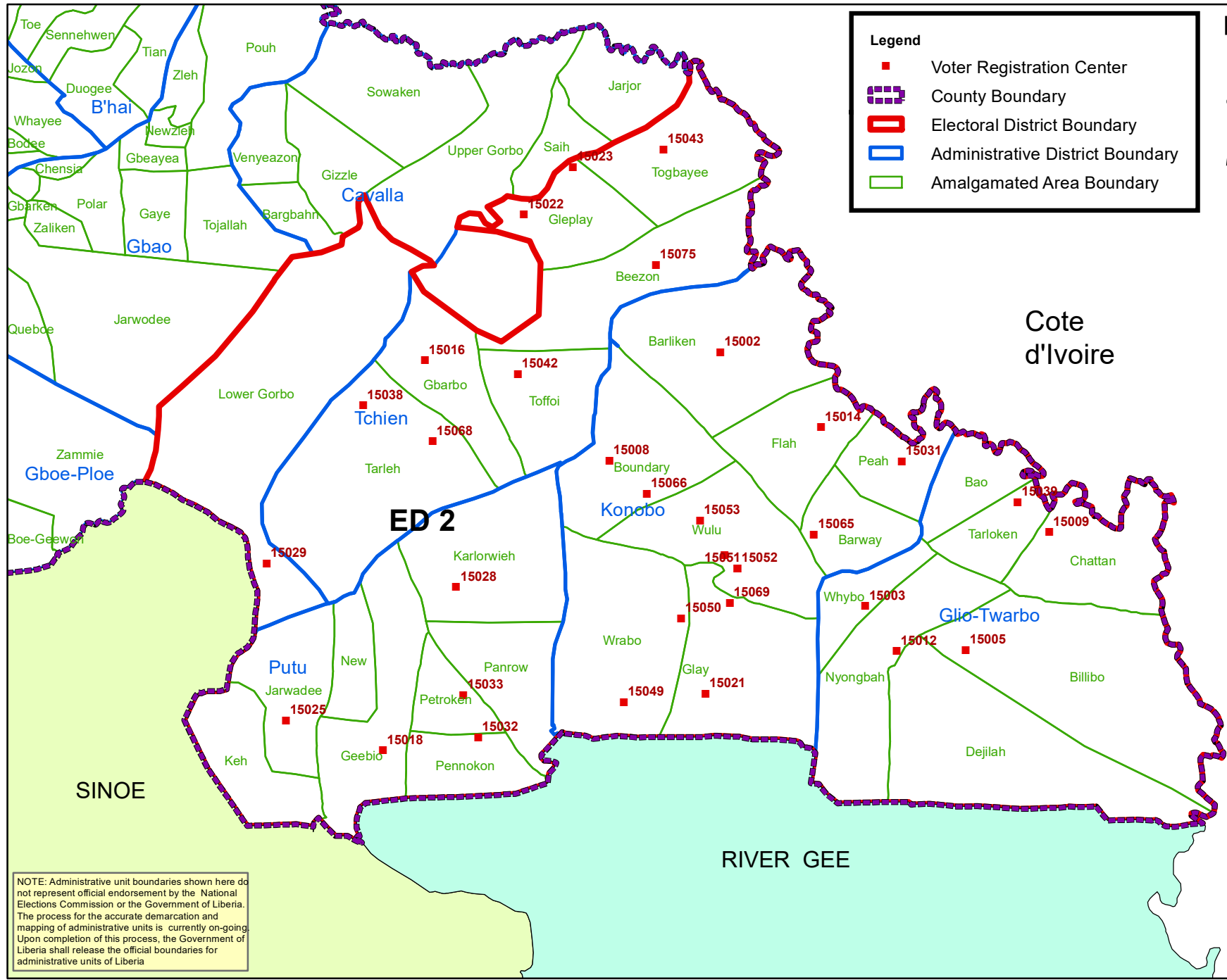


Grand Gedeh County Electoral District No. 2 2020



Legend

- Voter Registration Center
- County Boundary
- Electoral District Boundary
- Administrative District Boundary
- Amalgamated Area Boundary



Voter Registration Centers		
VRC Code	Center Name	Total Registrants
15002	Sayou-Woe Palava Hut	360
15003	Buway Palava Hut	191
15005	Billibo Public School	1,015
15008	Boundary Town Public School	776
15009	Chattan Elem. School	469
15012	Nyongbah Public School	143
15014	Flah Palava Hut	191
15016	Pellizon Elem. School	1,272
15018	Geebio Public School	579
15021	Glav Palava Hut	1,740
15022	Glavplay Town Public School	327
15023	Beh Town Elem. School	115
15025	Jarwadee Public School	958
15028	Karlorwih Public School	733
15029	Gardueh Town Public School	306
15031	Peah Elem. School	154
15032	Pennokon Putu Central High	604
15033	Petroken Elem. School	1,371
15038	Kumah Town Public School	428
15039	Tarloken Elem. & Jr. High School	310
15042	Toffoi Town Public School	972
15043	Togbayee Elem. School	154
15049	Belleh Yallah Palava Hut	4,151
15050	Wrabo Palava Hut	416
15051	Konobo Central High School	969
15052	Ziah Town Hall	1,256
15053	Wulu Elem. School	288
15065	Dehyealah Palava Hut	150
15066	Sentrudu Elementary School	132
15068	Jaibo Town Elementary School	183
15069	John David Elementary School	163
15070	Dweh Elementary School	295
15075	Bentley Camp Hall	1,183
Total Registrants (After Exhibition)		22,354

NOTE: Administrative unit boundaries shown here do not represent official endorsement by the National Elections Commission or the Government of Liberia. The process for the accurate demarcation and mapping of administrative units is currently on-going. Upon completion of this process, the Government of Liberia shall release the official boundaries for administrative units of Liberia

Voter registration centers have been assigned to electoral districts. Therefore, a person is assigned to the same electoral district of the center where he or she registered.

The final roll of registrants (after the Exhibition Exercise) is displayed.

Data Sources:
 2017 National Voter Registration Exercise- National Elections Commission
 2009-2010 Administrative Boundary & Locality Revalidation Project - Inter-Agency Taskforce on Delimitation (IATD: MIA, MLME, NEC, LISGIS)
 2007 National Geographic Planning - Liberia Institute of Statistics & Geo-Information Services (LISGIS)
 2006-2007 Boundary Harmonization Exercise - Special Joint Stakeholders Collaborative Committee (SJSCC)



Scale: 600,000
 Map Projection: UTM Zone 29N
 Datum: WGS 84
 Unit: Meter



Prepared & Printed By:
 National Elections Commission GIS Section
 Production Date: 29 November 2020