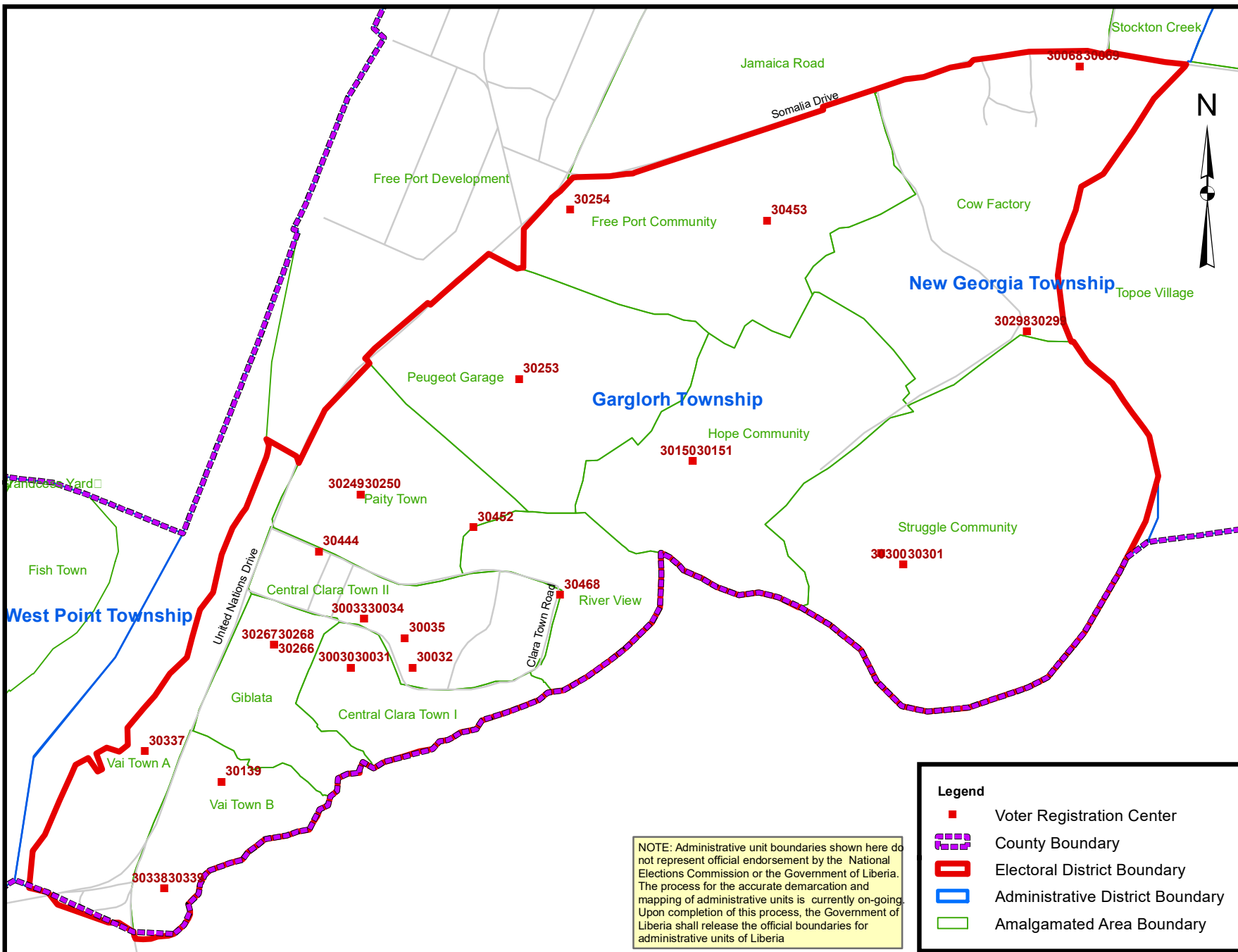


# Montserrado County Electoral District No. 14 2020



Voter Registration Centers		
VRC Code	Center Name	Total Registrants
30030	Central Clara Town Hut	1586
30031	Central Clara Town Hut	1555
30032	Fanina Isaac School	1242
30033	Clara Town Central High School	1246
30034	Clara Town Central High School	1804
30035	James Doe Young School	2095
30068	Mac Foundation School	2002
30069	Mac Foundation School	1819
30139	Savaco Community School	3611
30150	Royal Foundation School	1422
30151	Royal Foundation School	1228
30249	Albert T. Davies Annex I	782
30250	Albert T. Davies Annex II	562
30253	Ophelia Hoff Saytuman School	1406
30254	Timosa Elementary School	1641
30266	Marvia Sonu Elem. School	1602
30267	Marvia Sonu Elem. School	1450
30268	Marvia Sonu Elem. School	1613
30297	Salam Academy	3268
30298	Doe Community Institute	1915
30299	Doe Community Institute	1945
30300	Slum Community Academy	1149
30301	Slum Community Academy	1306
30337	Vai Town Market Block Factory	3238
30338	Imam Adullah Tunis School	1556
30339	Imam Adullah Tunis School	1662
30444	Clara Town Market	1651
30452	New Life School System	614
30453	Leobatt Christian Academy	2210
30468	Rev. Elijah Johnson Elem. School System	1263
<b>Total Registrants (After Exhibition)</b>		<b>50,443</b>

NOTE: Administrative unit boundaries shown here do not represent official endorsement by the National Elections Commission or the Government of Liberia. The process for the accurate demarcation and mapping of administrative units is currently on-going. Upon completion of this process, the Government of Liberia shall release the official boundaries for administrative units of Liberia

**Legend**

- Voter Registration Center
- County Boundary
- Electoral District Boundary
- Administrative District Boundary
- Amalgamated Area Boundary

Voter registration centers have been assigned to electoral districts. Therefore a person is assigned to the same electoral district of the center where he or she registered.

The final roll of registrants (after the Exhibition Exercise) is displayed.

Data Sources:  
 2017 National Voter Registration Exercise- National Elections Commission  
 2009-2010 Administrative Boundary & Locality Revalidation Project - Inter-Agency Taskforce on Delimitation (IATD: MIA, MLME, NEC, LISGIS)  
 2007 National Geographic Planning - Liberia Institute of Statistics & Geo-Information Services (LISGIS)  
 2006-2007 Boundary Harmonization Exercise - Special Joint Stakeholders Collaborative Committee (SJSCC)



Scale: 1:12,000  
 Map Projection: UTM Zone 29N  
 Datum: WGS 84  
 Unit: Meter



Prepared & Printed By:  
 National Elections Commission GIS Section  
 Production Date: 29 November 2020