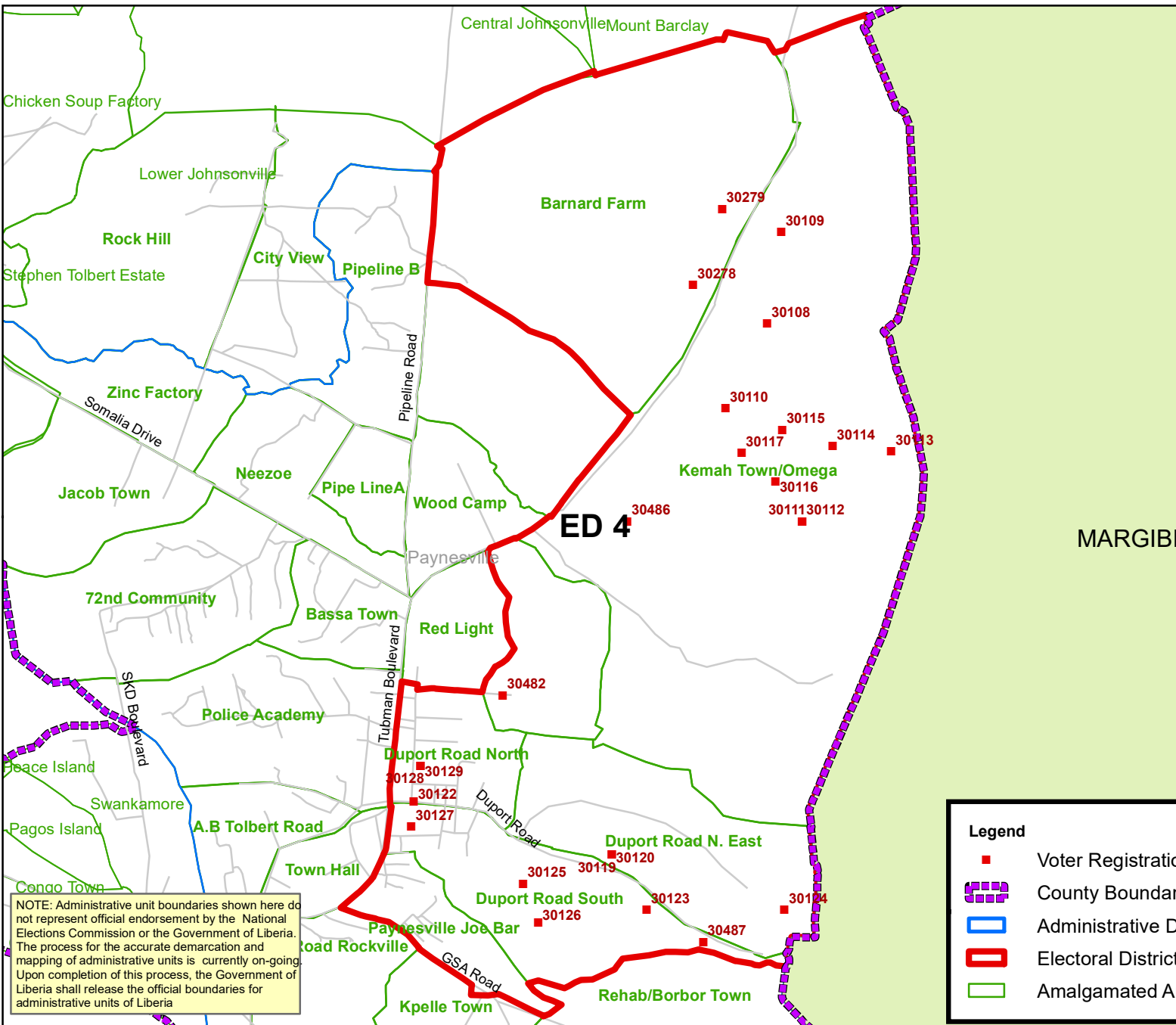


Montserrado County Electoral District No.4 2020



Voter Registration Centers		
VRC Code	Center Name	Total Registrants
30108	John P. Wahpoe Inland Academy	2165
30109	Right Hand Education Foundation	2559
30110	Brighter Day Perparatory School	3578
30111	Soul Clinic Mission/Maggie Lampkins Institute	1986
30112	Soul Clinic Mission/Maggie Lampkins Institute	2704
30113	Kingdom Foundation Institute	2359
30114	St. Samuel Elem .& Jr. High School	3390
30115	S. Patrick Jallah School	2837
30116	Tomorrow People Foundation	2488
30117	Sammy M. Dukuly School	2030
30119	Baptist Field Church	3151
30120	Baptist Field Church	2992
30122	Rik-C Day Care, Nursery & Pre-School	2631
30123	Maretha School	2775
30124	Zinah Foundation School	1602
30125	Stronger Hope Central Academy	3686
30126	Rev. Mother Sarah School System	3830
30127	William Bean Institute/World Wide	2992
30128	Nathan E. Gibson School	3255
30129	Nathan E. Gibson School	2368
30278	Whein Town Public School	3479
30279	Graceland Christian Academy	3951
30482	Salvation In Christ High School	4002
30486	Morris' Farm Public School	1826
30487	One Family Christian Center	1257
Total Registrants (After Exhibition)		69,893



NOTE: Administrative unit boundaries shown here do not represent official endorsement by the National Elections Commission or the Government of Liberia. The process for the accurate demarcation and mapping of administrative units is currently on-going. Upon completion of this process, the Government of Liberia shall release the official boundaries for administrative units of Liberia

Legend

- Voter Registration Center
- County Boundary
- Administrative District Boundary
- Electoral District Boundary
- Amalgamated Area Boundary

Voter registration centers have been assigned to electoral districts. Therefore, a person is assigned to the same electoral district of the center where he or she registered.

The final roll of registrants (after the Exhibition Exercise) is displayed.

Data Sources:
 2017 National Voter Registration Exercise- National Elections Commission
 2009-2010 Administrative Boundary & Locality Revalidation Project - Inter-Agency Taskforce on Delimitation (IATD: MIA, MLME, NEC, LISGIS)
 2007 National Geographic Planning - Liberia Institute of Statistics & Geo-Information Services (LISGIS)
 2006-2007 Boundary Harmonization Exercise - Special Joint Stakeholders Collaborative Committee (SJSCC)



Scale: 1:54,000
 Map Projection: UTM Zone 29N
 Datum: WGS 84
 Unit: Meter



Prepared & Printed By:
 National Elections Commission GIS Section
 Production Date: 29 November 2020