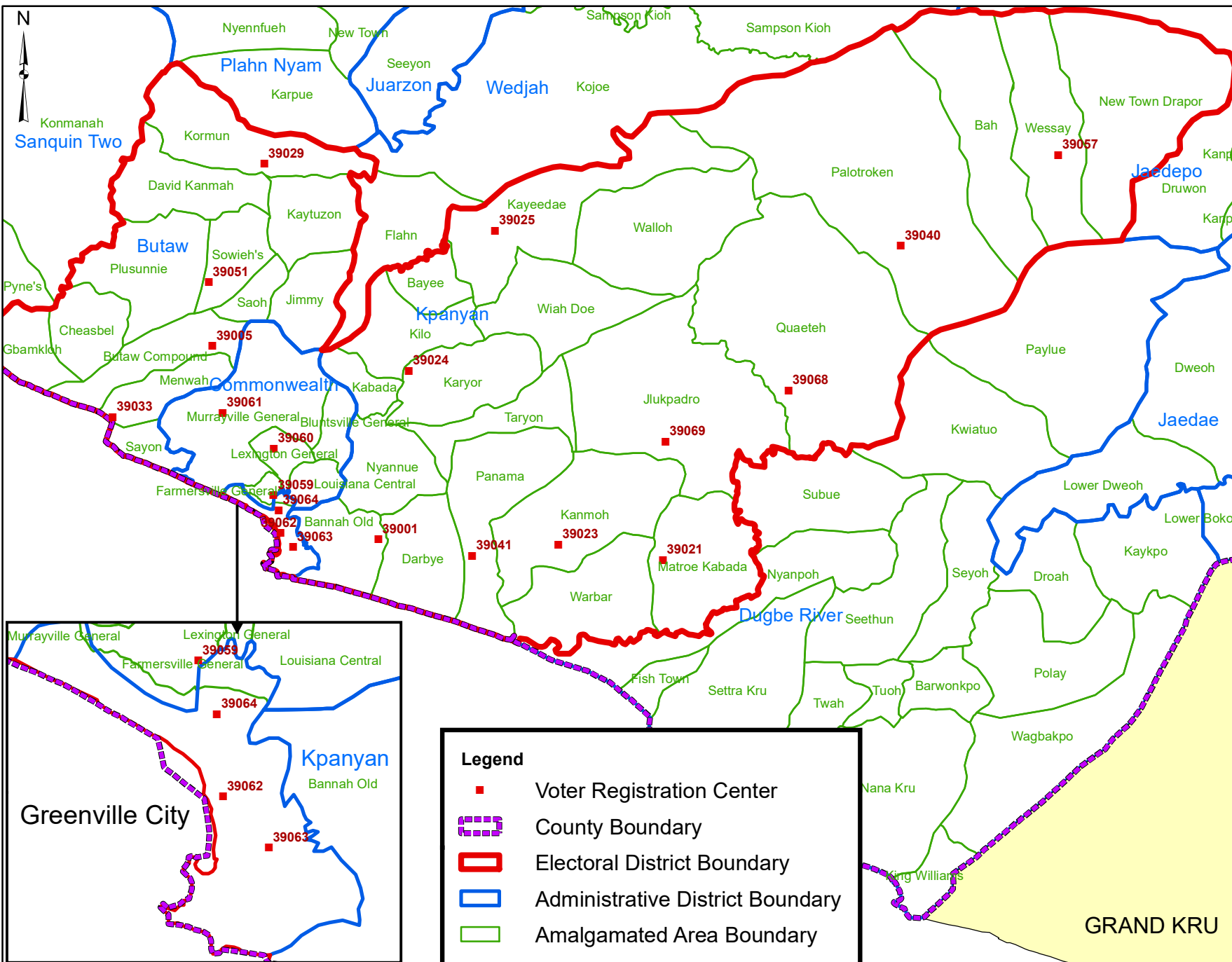


# Sinoe County Electoral District No.1 2020



Voter Registration Centers		
VRC Code	Center Name	Total Registrants
39001	Richard Kantah Jr. High School	643
39005	Butaw Compound Administrative Building	485
39021	Kabada Adm. Building	940
39023	Tubmanville Clinic	904
39024	Dejilla Public school	1390
39025	Klaniadae Palava Hut	493
39029	Grisby Farm Public School	996
39033	Menwah Palava Hut	291
39040	Palotroken Palava Hut	845
39041	Wolee Jr. High School	605
39051	Blaoh Palava Hut	1640
39057	Wessay Town Palava Hut	303
39059	Sinoe Multilateral High School	1648
39060	Lexington Jr. High School	1055
39061	Lower Murrayville Elem. School	648
39062	Greenville Administrative Building	2668
39063	Seebeh Jr. High School	1903
39064	Harrison Grigsby Methodist High School	2721
39068	Plasiken Palava Hut	487
39069	Saywon Public School	462
<b>Total Registrants (After Exhibition)</b>		<b>21,127</b>

Voter registration centers have been assigned to electoral districts. Therefore, a person is assigned to the same electoral district of the center where he or she registered.

The final roll of registrants (after the Exhibition Exercise) is displayed.

NOTE: Administrative unit boundaries shown here do not represent official endorsement by the National Elections Commission or the Government of Liberia. The process for the accurate demarcation and mapping of administrative units is currently on-going. Upon completion of this process, the Government of Liberia shall release the official boundaries for administrative units of Liberia

**Legend**

- Voter Registration Center
- County Boundary
- ▬ Electoral District Boundary
- ▬ Administrative District Boundary
- ▬ Amalgamated Area Boundary

Data Sources:  
 2017 National Voter Registration Exercise- National Elections Commission  
 2009-2010 Administrative Boundary & Locality Revalidation Project - Inter-Agency Taskforce on Delimitation (IATD: MIA, MLME, NEC, LISGIS)  
 2007 National Geographic Planning - Liberia Institute of Statistics & Geo-Information Services (LISGIS)  
 2006-2007 Boundary Harmonization Exercise - Special Joint Stakeholders Collaborative Committee (SJSCC)

Scale: 1:320,000  
 Map Projection: UTM Zone 29N  
 Datum: WGS 84  
 Unit: Meter



Prepared & Printed By:  
 National Elections Commission GIS Section  
 Production Date: 29 November 2020

