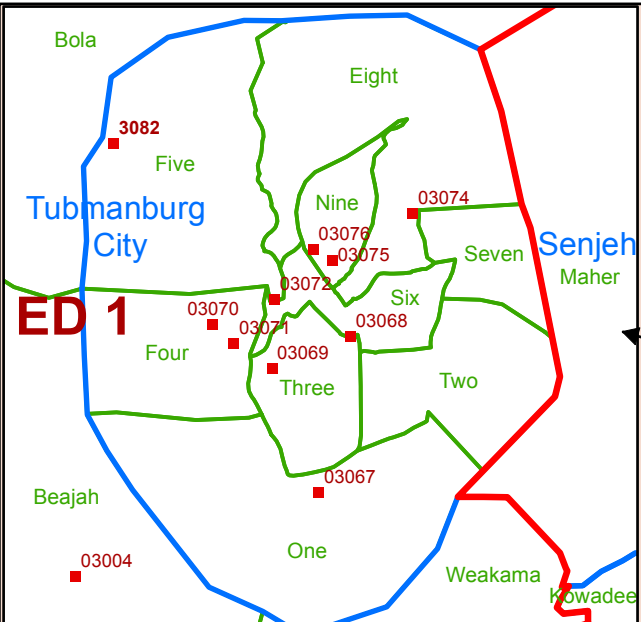


Bomi County Electoral District No.1 2017

Voter Registration Centers		
VRC Code	Center Name	Total Registrants
3001	Baima Palava Hut	160
3002	Barmo Palava Hut	359
3003	Beafinie Town Hall	485
3004	Beajah Public School	410
3005	Besao palava Hut	706
3006	Gba-Jakeh Gba Public School	3,579
3007	Government Farm Senjeh Town H	893
3008	Married Camp Town Hall	1,196
3009	Dependent Camp Town Hall	1,488
3018	Bola Town Palava Hut	332
3023	Boiling Camp Town Hall	460
3024	Gayah Hills Palava Hut	991
3042	Sackie Town Hall	356
3047	Red Hill Palava Hut	866
3049	Zamian Town Palava Hut	209
3067	Weakama Public School	1,337
3068	Jimina A. Wilson Public School	1,200
3069	Nyeila English & Arabic School	740
3070	Joseph Town Palava Hut	934
3071	C. H. Dewey High School	736
3072	Bomi Jr. High School	852
3073	Yomo Town Public School	320
3074	Administrative Building	426
3075	Court House, Moses Vincent Com	1,820
3076	Vai Town Cinema	1,729
3081	Gbonkor Village Palava Hut	265
3082	Kamara Town Public School	177
Total Registrants (After Exhibition)		23,026

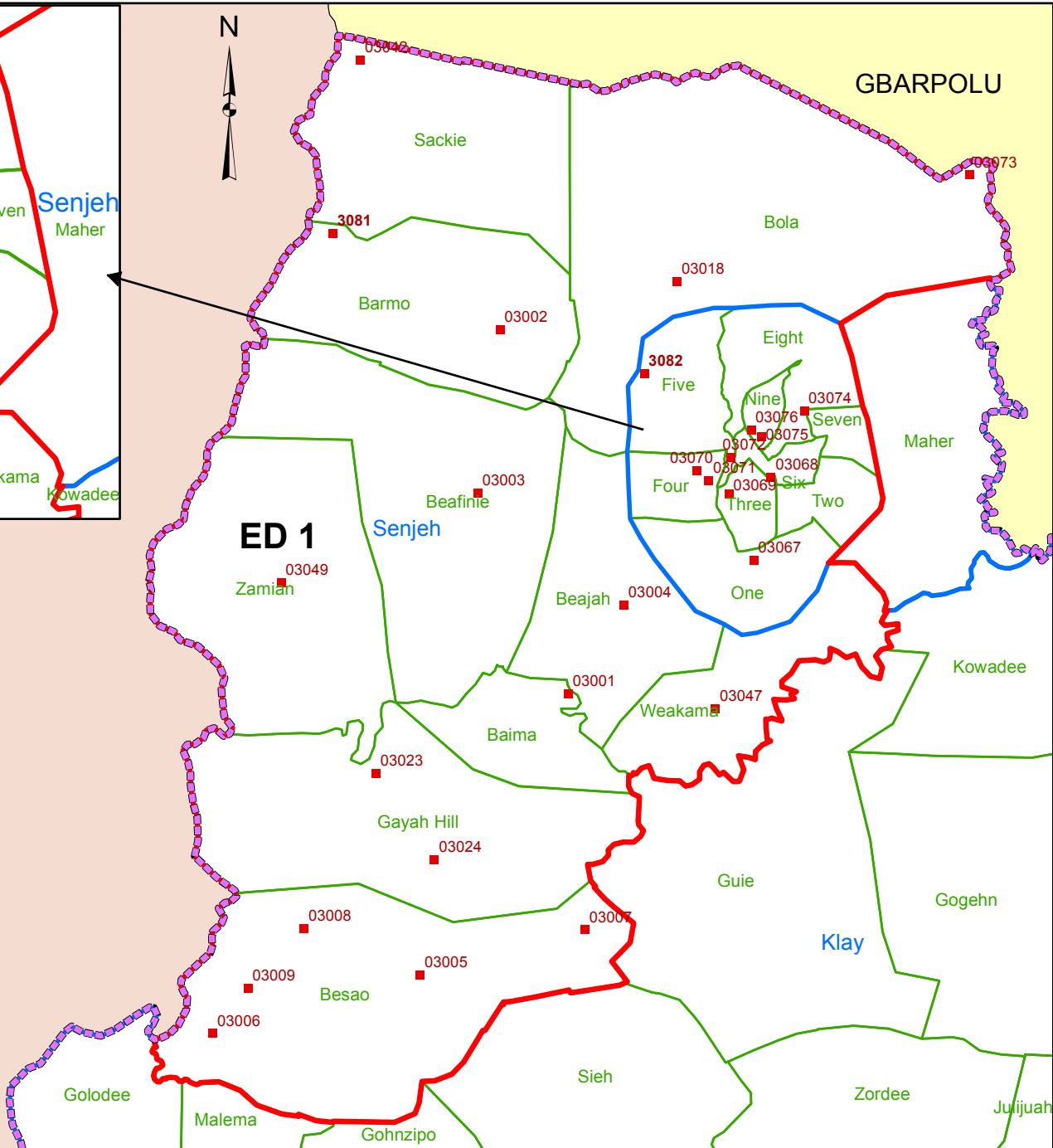


GRAND CAPE MT.

NOTE: Administrative unit boundaries shown here do not represent official endorsement by the National Elections Commission or the Government of Liberia. The process for the accurate demarcation and mapping of administrative units is currently on-going. Upon completion of this process, the Government of Liberia shall release the official boundaries for administrative units of Liberia

Legend

- Voter Registration Center
- County Boundary
- Electoral District Boundary
- Administrative District Boundary
- Amalgamated Area Boundary



Voter registration centers have been assigned to electoral districts. Therefore, a person is assigned to the same electoral district of the center where he or she registered.

The final roll of registrants (after the Exhibition Exercise) is displayed.

Data Sources:
 2017 National Voter Registration Exercise- National Elections Commission
 2009-2010 Administrative Boundary & Locality Revalidation Project - Inter-Agency Taskforce on Delimitation (IATD: MIA, MLME, NEC, LISGIS)
 2007 National Geographic Planning - Liberia Institute of Statistics & Geo-Information Services (LISGIS)
 2006-2007 Boundary Harmonization Exercise - Special Joint Stakeholders Collaborative Committee (SJSCC)



Scale: 1:200,000
 Map Projection: UTM Zone 29N
 Datum: WGS 84
 Unit: Meter



Prepared & Printed By:
 National Elections Commission
 Production Date: 20 June 2017