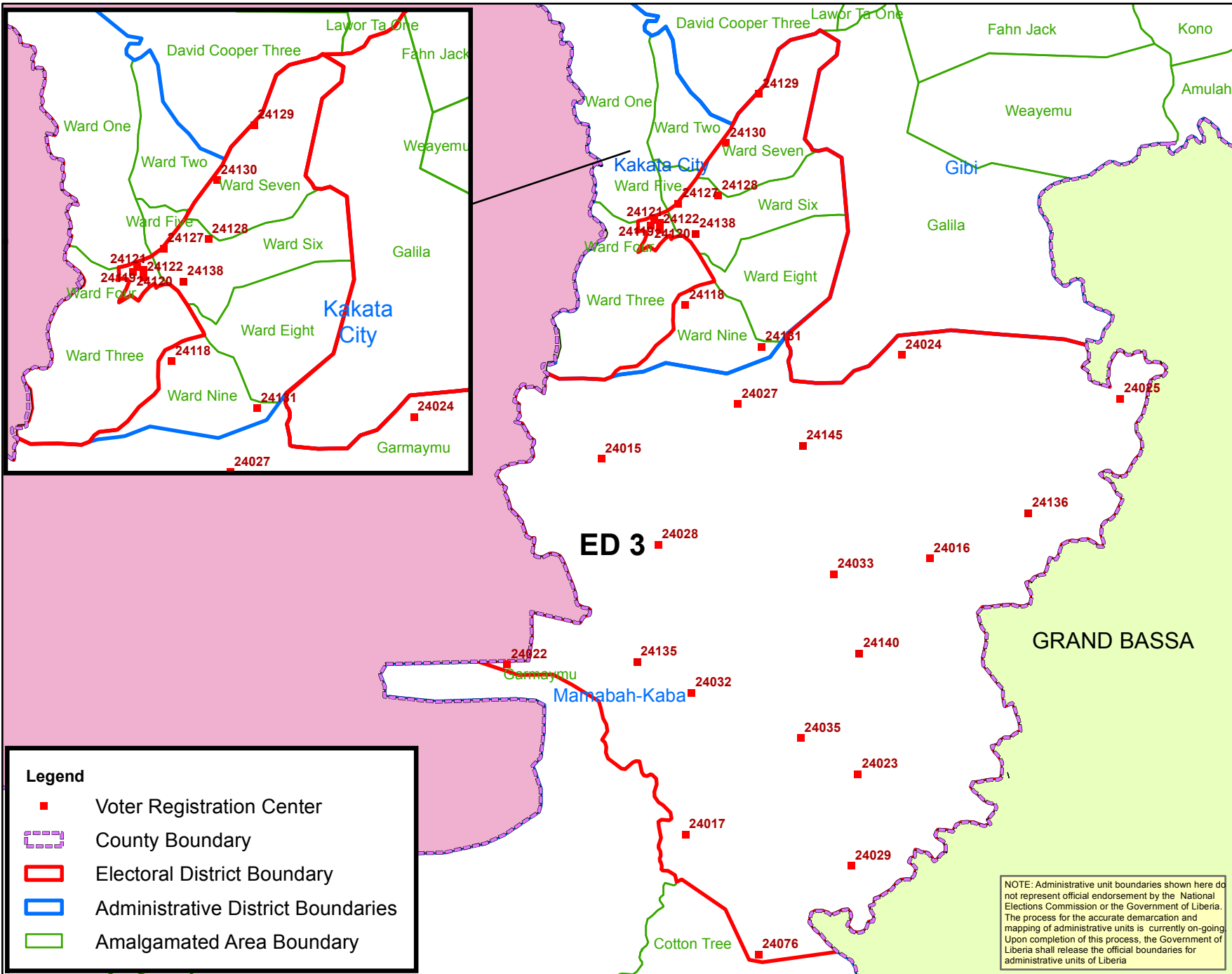


Margibi County Electoral District No. 3 2017



Voter Registration Centers		
VRC Code	Center Name	Total Registrants
24015	Division 25 Office	354
24016	Division 29 Camp 2 Office	677
24017	Division 36 Office	135
24022	Division 14 Camp 3 Office	362
24023	Division 38 Old Camp office	699
24024	Division 31 Camp 3 Office	885
24025	Division 33 Office	515
24027	Division 26 Office	501
24028	Division 24 Camp 2 School	300
24029	Division 40 Camp 1 Office	455
24032	Division 28 office	959
24035	Division 37 Office	574
24076	Division 43 School	873
24118	Bright Farm School	550
24119	Evening Star Baptist Church	1,413
24120	Federation of Transport Union	1,308
24121	Brich-McNutt school	1,105
24122	E.J. Yancy School	2,480
24125	St. Augustine School	2,463
24126	Dominique Hena School	1,972
24127	Asaru Isamic School	1,552
24128	Mission for Today School	1,130
24129	Gborfela Public School	283
24130	Madina Community School	831
24131	26 Gate Community School	641
24135	Division 22 PPD Palava Hut	637
24136	Division 35 Palava Hut	531
24138	Old EJ Yancy	1,671
24140	Borbor Town Palava Hut	983
24145	Dartu Ta Public School	538
Total Registrants (After Exhibition)		27,377

Legend

- Voter Registration Center
- County Boundary
- Electoral District Boundary
- Administrative District Boundaries
- Amalgamated Area Boundary

NOTE: Administrative unit boundaries shown here do not represent official endorsement by the National Elections Commission or the Government of Liberia. The process for the accurate demarcation and mapping of administrative units is currently on-going. Upon completion of this process, the Government of Liberia shall release the official boundaries for administrative units of Liberia

Voter registration centers have been assigned to electoral districts. Therefore, a person is assigned to the same electoral district of the center where he or she registered.

Data Sources:
 2017 National Voter Registration Exercise- National Elections Commission
 2009-2010 Administrative Boundary & Locality Revalidation Project - Inter-Agency Taskforce on Delimitation (IATD: MIA, MLME, NEC, LISGIS)
 2007 National Geographic Planning - Liberia Institute of Statistics & Geo-Information Services (LISGIS)
 2006-2007 Boundary Harmonization Exercise - Special Joint Stakeholders Collaborative Committee (SJSCC)



Scale: 1:150,000
 Map Projection: UTM Zone 29N
 Datum: WGS 84
 Unit: Meter



Prepared & Printed By:
 National Elections Commission
 Production Date: 20 June 2017